

# CPS4.10

---



- 4 x 1000 W
- High Efficient Class-D Design
- Optimized for permanent installation
- EN 54-16: 2008
- Optional Remote Control Module RCM-810



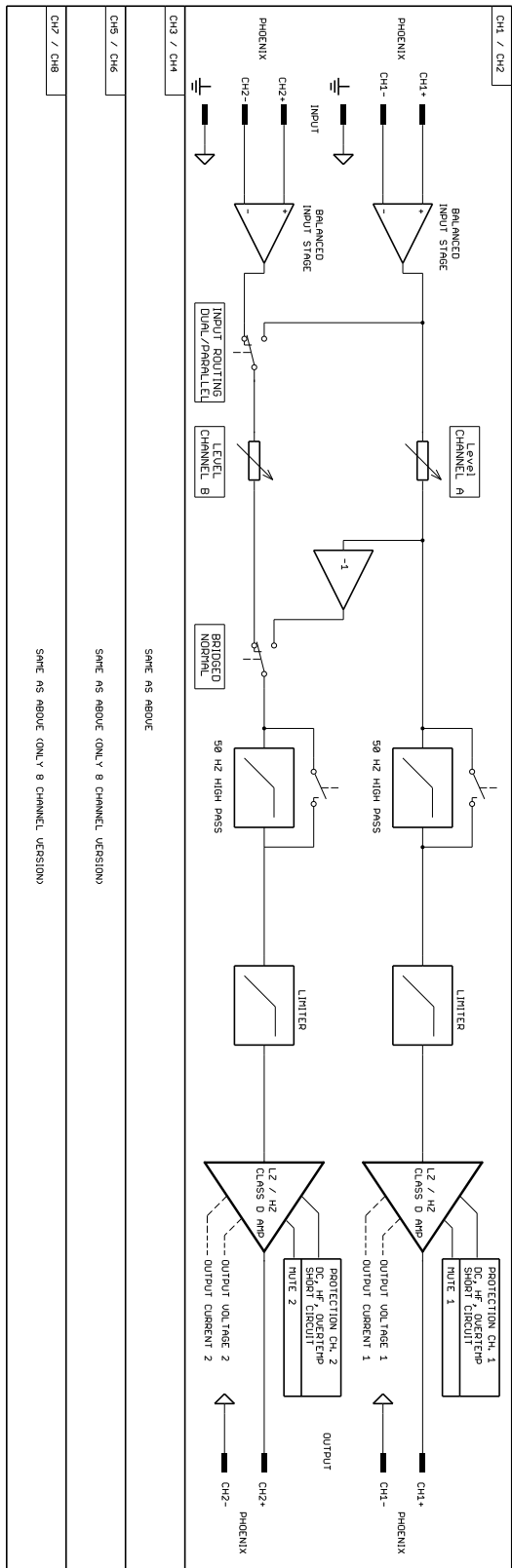
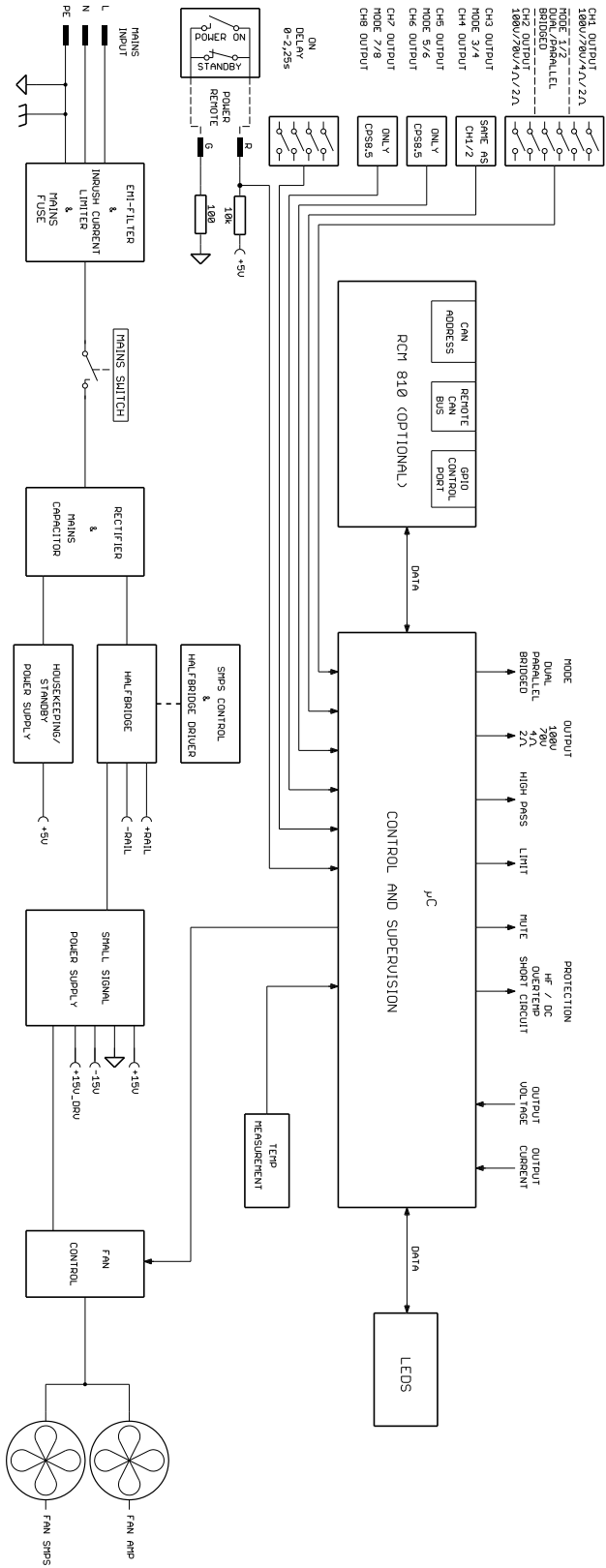
The Electro-Voice CPS4.10 amplifier offers four independent Class-D Variable Load Drive (VLD) amplifier blocks, each one capable of delivering up to 1000 Watts into Low-Z or High-Z loads. Per default, each channel can be configured individually for max. power output into either 2  $\Omega$ , 4  $\Omega$ , 70V- or 100V-networks without involvement of any output transformers. Being designed for professional audio installation market, special care was taken for long term cost of ownership parameters: In addition to remarkably low current consumption and heat dissipation, the CPS4.10 provides remote standby switching with just 5 Watts consumption in standby mode. An optional remote control module RCM-810 provides control and supervision features via IRIS-Net, including monitoring of amplifier status and real time load supervision. In addition, via RCM-810 the Variable Load Drive characteristics can be set for max. power output into any load between 2  $\Omega$  and 10  $\Omega$ , in steps of 0.1  $\Omega$ .

## Technical specifications

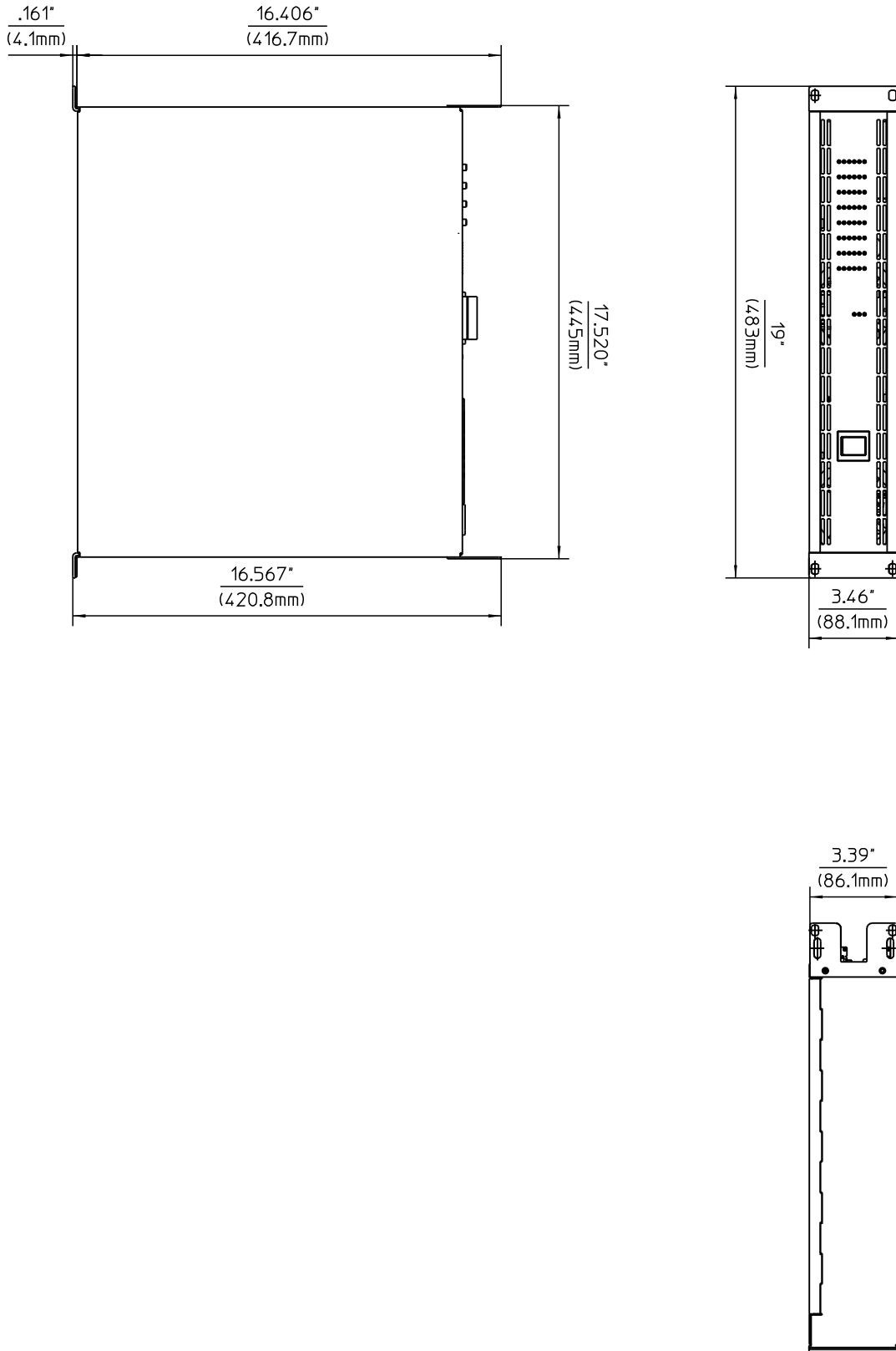
	Low impedance mode			High impedance mode	
	2 $\Omega$	4 $\Omega$	8 $\Omega$	70 V/10 $\Omega$	100 V/20 $\Omega$
Maximum midband output power, THD = 1%, 1 kHz, 4 channels driven	1000 W	1000 W	500 W VLD: 1000 W	500 W	500 W
Rated output power, THD < 0.3%, 20–20 000 Hz, 4 channels driven	900 W	900 W	450 W VLD: 900 W	900 W	900 W
Maximum bridged output power, THD = 1%, 1 kHz	-	2000 W	2000 W	2000 W/10 $\Omega$	2000 W/20 $\Omega$
Alarm power rating (according to EN 54-16)	-	350 W	350 W	350 W	350 W
Maximum RMS voltage swing, THD = 1%, 1 kHz	45 V	63 V	63 V VLD: 89 V	70 V	100 V
Power Bandwidth, THD = 1%, ref. 1 kHz, half power at rated load	10–25000 Hz			50–25000 Hz	
Voltage gain, ref. 1 kHz	32 dB	32 dB	32 dB	33 dB	36 dB
Input Sensitivity, rated power, 1 kHz	1.1 V (+3.0 dBu)	1.55 V (+6.0 dBu)	1.55 V (+6.0 dBu)	1.55 V (+6.0 dBu)	1.55 V (+6.0 dBu)
THD at rated output power, MBW = 80 kHz, 1 kHz	< 0.05%				
IMD-SMPTE, 60 Hz, 7 kHz	< 0.05%				
DIM30, 3.15 kHz, 15 kHz	< 0.02%				
Maximum input level	+22 dBu (9.76 V <sub>rms</sub> )				
Crosstalk, ref. 1 kHz, at rated output power	< -80 dB				
Frequency response, ref. 1 kHz, 8 $\Omega$ load	15–30000 Hz ( $\pm$ 1 dB)				
Input impedance, active balanced	20 k $\Omega$				
Damping factor, 1 kHz, 8 $\Omega$	> 240				
Slew rate	28 V/ $\mu$ s				
Signal-to-noise ratio (A-weighted)	101 dB	103 dB	103 dB	104 dB	106 dB
Output noise, A-weighted	< -66 dBu	< -65 dBu	< -65 dBu	< -65 dBu	< -64 dBu
Output stage topology	Class D				
Power requirements	220-240 V, 50-60 Hz or 120 V, 50-60 Hz or 100 V, 50-60 Hz				
In-rush current	27 A				
In-rush current, after five-second power cycle	14 A				
Power consumption, 1/8 maximum output power	840 W				
Protection	Audio Limiters, High Temperature, DC, HF, Short Circuit, Peak Current Limiters, Inrush Current Limiters, Turn-on Delay, Mains Circuit Breaker Protection, Mains Over/Undervoltage Protection				
Electromagnetical environment	E1, E2, E3				
Cooling	Front-to-Rear, temperature controlled fans				

	Low impedance mode			High impedance mode	
	2 $\Omega$	4 $\Omega$	8 $\Omega$	70 V/10 $\Omega$	100 V/20 $\Omega$
Operating temperature	+5° to +40° C				
Safety class	I				
Product dimensions (Width x Height x Depth)	483 x 88.1 x 420.8 mm				
Net weight	11.1 kg				

\* Depending on the ambient temperature, the unit might not operate continuously at 2  $\Omega$  load in Dual Mode or 4  $\Omega$  load in Bridged Mode. In addition input power exceeds 1.1 times rated power consumption with at 2  $\Omega$  load in Dual Mode or 4  $\Omega$  load in Bridged Mode.

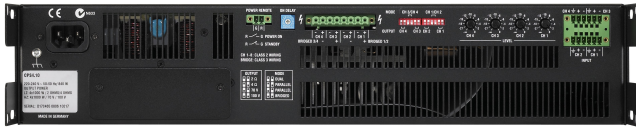


Circuit diagram



Dimensions

## System overview



Rear view

## Certifications and approvals

EN 54-16: 2008

## Parts included

Quantity	Component
1	Power amplifier
1	Power cord
1	Output Euroblock connector 8-pole (Phoenix, IC 2,5/8-STF-5,08, 1825378, F.01U.103.369) with Euroblock connector housing (Phoenix, KGS-MSTG 2.5/8, 1783779, F.01U.103.370)
2	Input Euroblock connector 6-pole (Phoenix, MC 1,5/6-STF-3,81, 1827745, F.01U.104.179)
1	Power remote Euroblock connector 2-pole (Phoenix, MC 1,5/2-STF-3,81, 1827703, F.01U.103.533)
1	User manual

## Ordering information

### CPS4.10 100V

4-channel Class-D amplifier, 2RU , per channel configurable 2/4Ohm/70V/100V, slot f. optional RCM810 remote module; 4 x 1000 W  
Order number **F.01U.101.296**

### CPS4.10 120V

4-channel Class-D amplifier, 2RU , per channel configurable 2/4Ohm/70V/100V, slot f. optional RCM810 remote module; 4 x 1000 W  
Order number **F.01U.101.295**

### CPS4.10 220-240V

4-channel Class-D amplifier, 2RU , per channel configurable 2/4Ohm/70V/100V, slot f. optional RCM810 remote module; 4 x 1000 W  
Order number **F.01U.101.294**

## Accessories

### LML-1

Line measuring load  
Order number **F.01U.266.132**

### RCM-810

RCM-810 Remote Control Module for IRIS-Net  
Order number **F.01U.101.277**

### RMK-15

Rack Mount Kit for amplifiers, Length 15,5“; 1L/1R  
Order number **F.01U.135.402**

## Represented by:

### Germany:

Bosch Sicherheitssysteme GmbH  
Robert-Bosch-Ring 5  
85630 Grasbrunn  
Germany

Bosch Security Systems, Inc.  
12000 Portland Avenue South  
Burnsville MN 55337  
USA

[www.electrovoice.com](http://www.electrovoice.com)