

# PBE-5AC-620 Quick Start Guide

## Package content



Parabolic reflector with mounting bracket



power horn



Back case



support arm



Upper Post Bracket Assembly



lower post bracket



Clamp



Screws (qty: 4)



Hex Head Cap Screws (Qty: 5)



lock washers



Flat washers (cant.: 5)



stabilizer mounts

(cant.: 5)



M10x100 screws (qty: 2) M10 flange nuts (qty: 2)

(cant.: 2)



Round head screws M8x150  
(qty: 4)



M8 flange nuts (Qty: 4) Foot clamp (Qty: 2) Gigabit PoE (24V, 0.5A) with mounting bracket



Power cord

## installation requirements

- Phillips screwdriver
- 13mm wrench
- 16mm wrench
- Category 5 (or higher) shielded cabling must be used for all Ethernet connections and must be connected to the AC ground of the PoE.

We recommend that you protect your networks from harmful outdoor environments and electrostatic discharge phenomena with Ubiquiti's Industrial Grade Shielded Ethernet Cable.

For more information, visit [ui.com/toughcable](http://ui.com/toughcable)

---

# hardware description

## bottom view



### 1 Ethernet

The Gigabit Ethernet port is used to connect power and must be connected to the LAN and DHCP server.

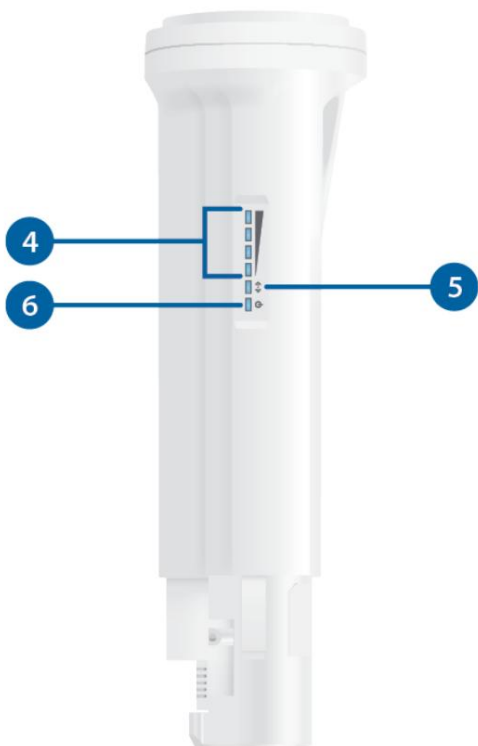
### 2 reset button

To restore factory defaults, press and hold the reset button for more than 10 seconds while the device is turned on. You can also remotely reset the device using the reset button on the bottom of the Gigabit PoE adapter.

### 3 release button

After mounting the PowerBeam, check the release button; it should be fully engaged in the button hole on the back cover. In this way, you will ensure that the power horn is well located and fixed. If you need to remove the power horn, please press the release button first.

## Luces LED



#### 4 Sign

On airOS®, you can modify the wireless LED signal strength threshold value in the Wireless tab, under Signal LED Thresholds. Each LED will turn on when the wireless signal strength is equal to or greater than the threshold value set for the LED indicator. The default threshold values for these LED indicators are listed below:

*-65 dBm -73 dBm -80 dBm -94 dBm*



#### 5 Ethernet

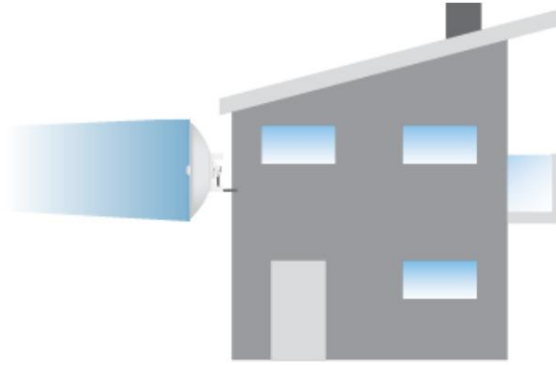
The LED indicator will turn solid blue when the device is connected to an Ethernet network and will blink if there is activity.

#### 6 Feeding

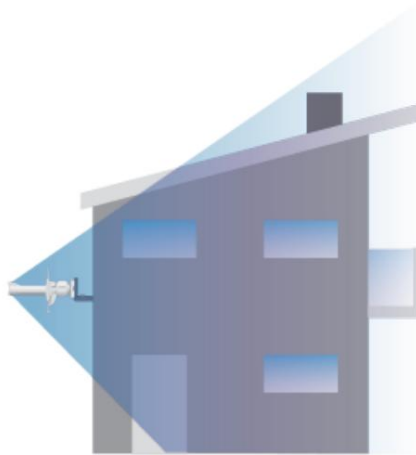
The LED indicator will light blue when the device is connected to a power source.

## Application Examples

Outdoor mounted PowerBeam with reflector installed provides directional outdoor coverage (gain dependent on reflector).

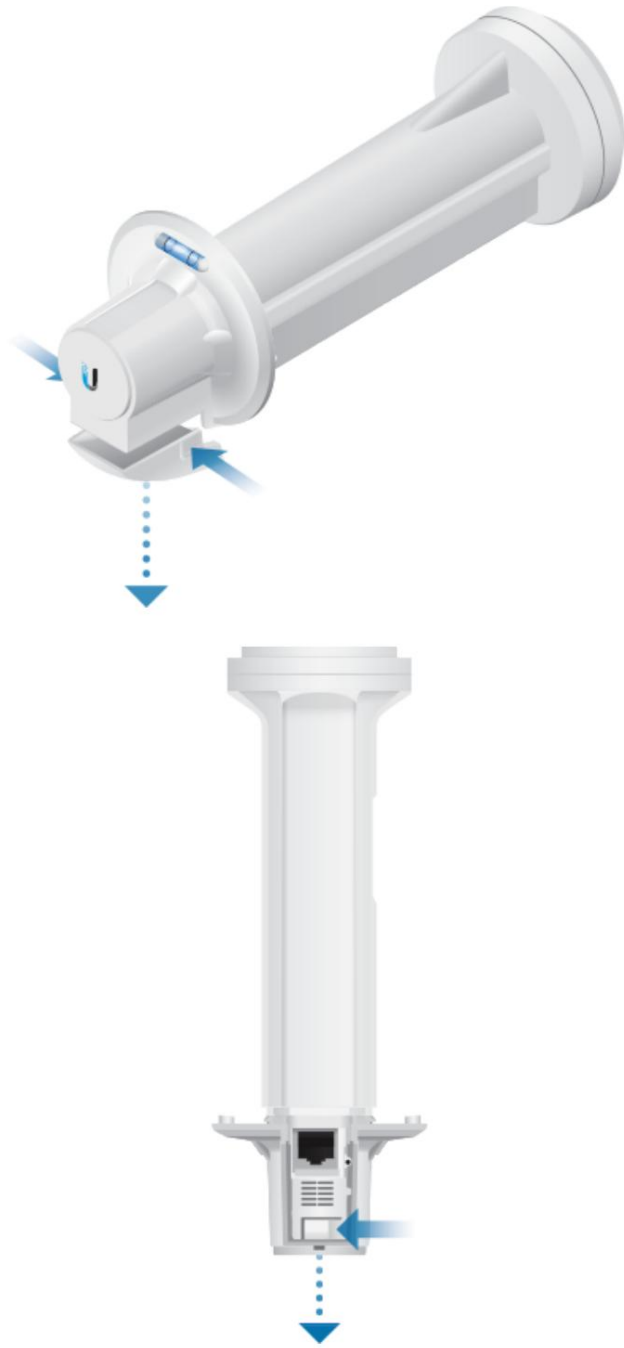


The exterior mounted PowerBeam without the reflector installed provides exterior to interior coverage only through the 3 dBi feed horn.



## Installation

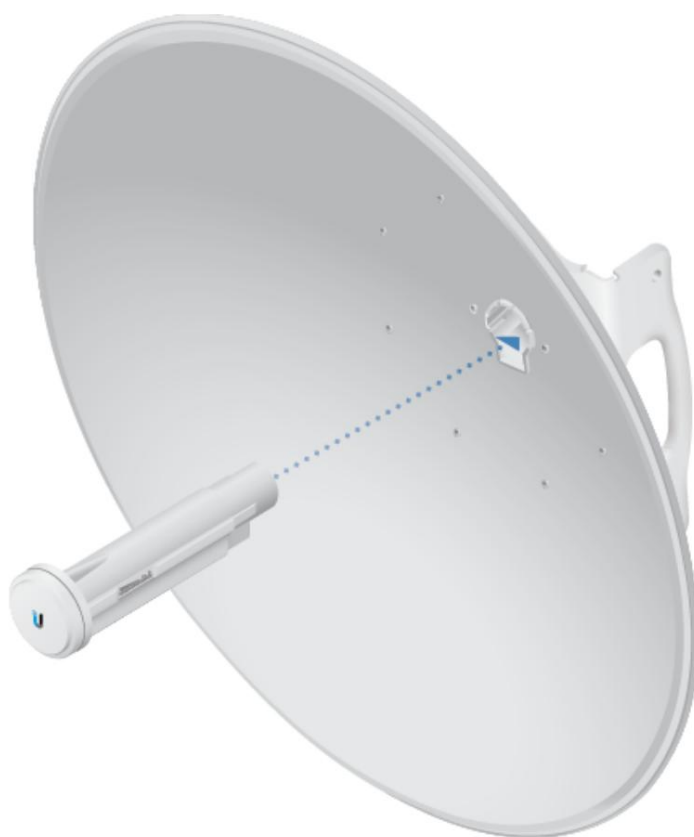
1.



2.



3.

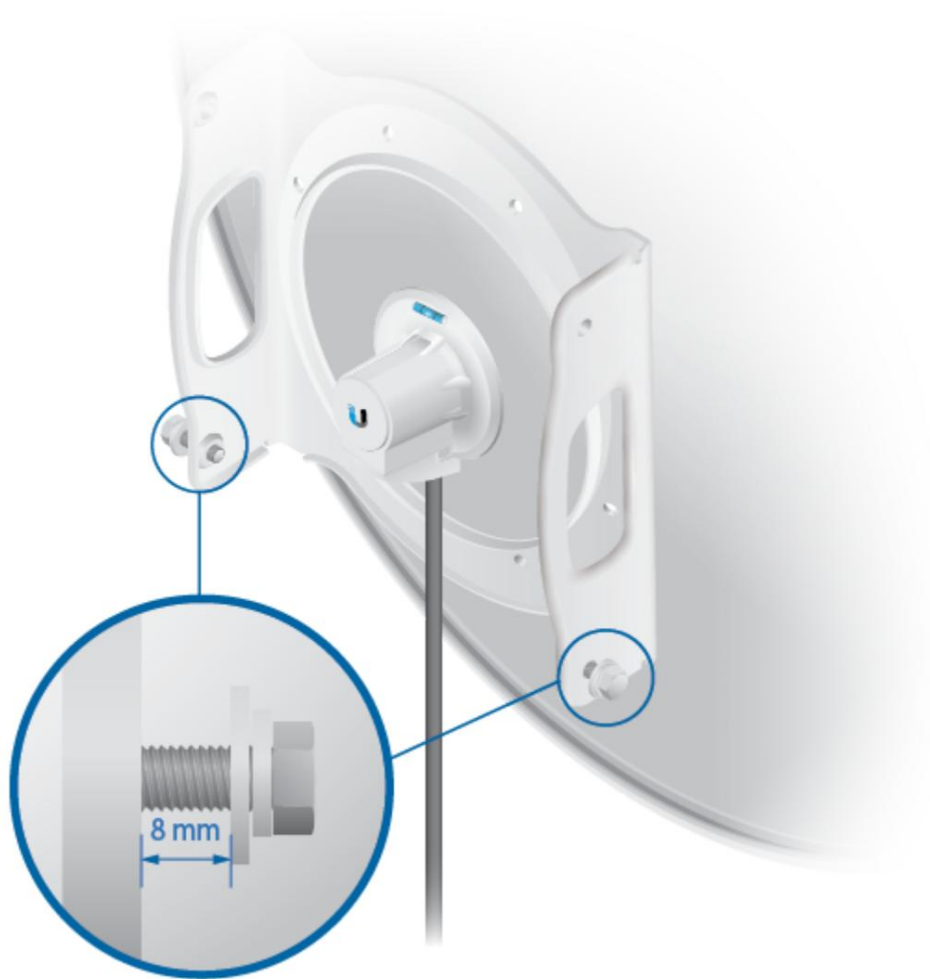


4.

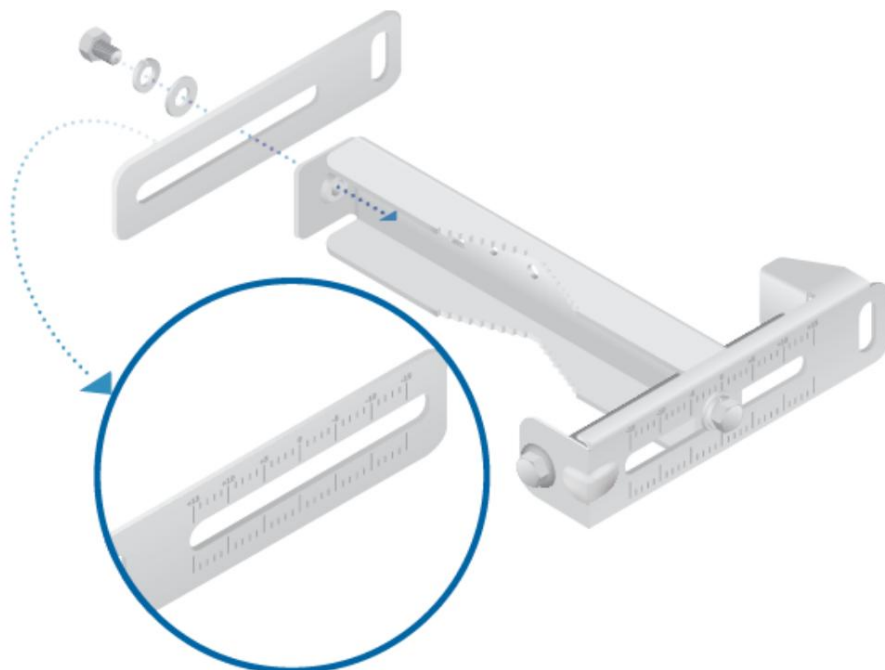


5.

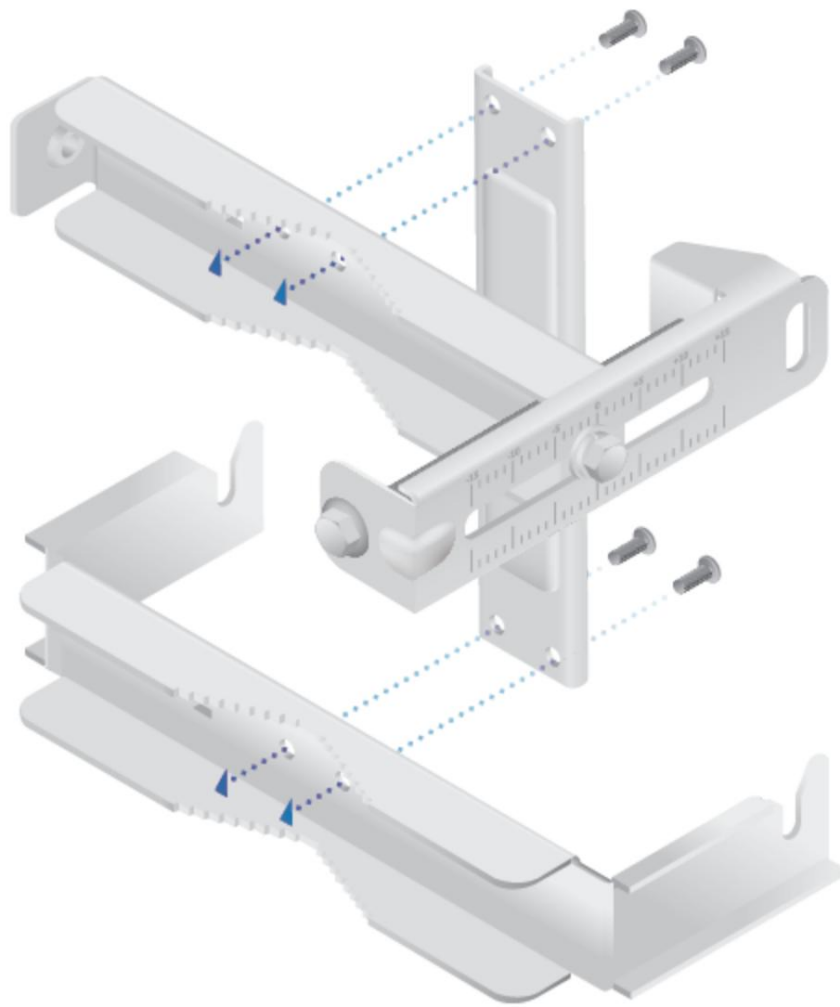




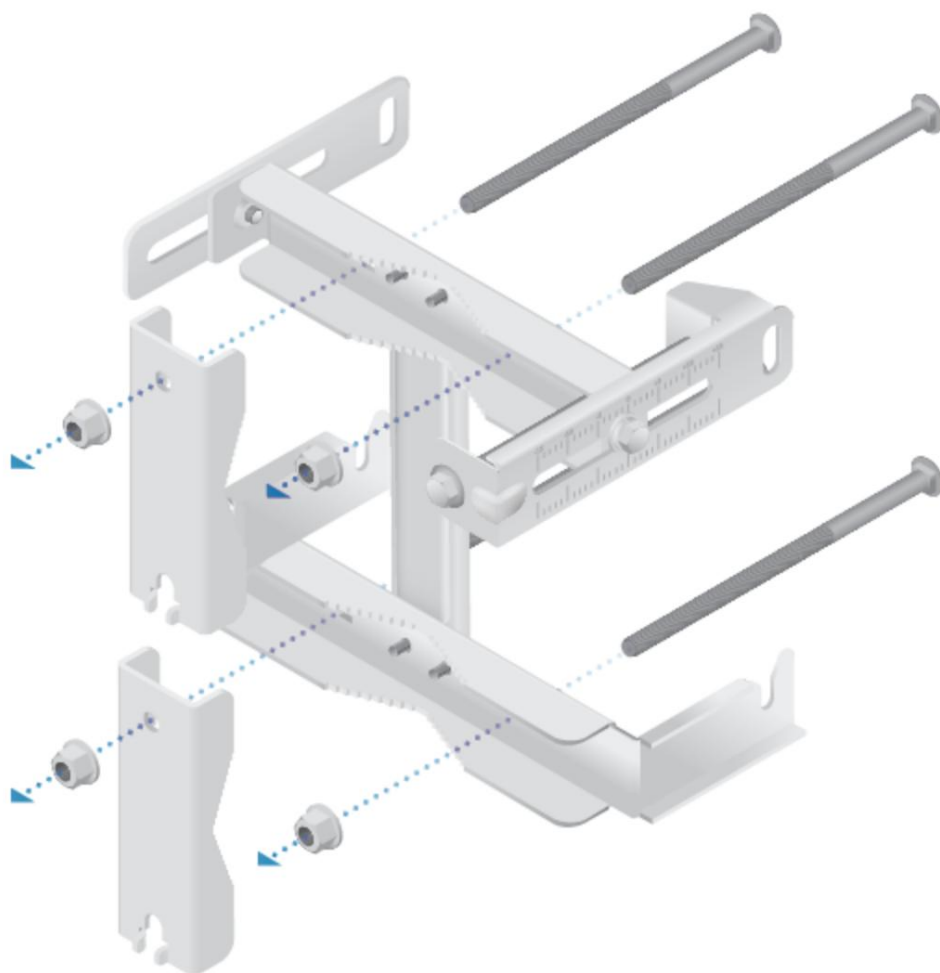
6.



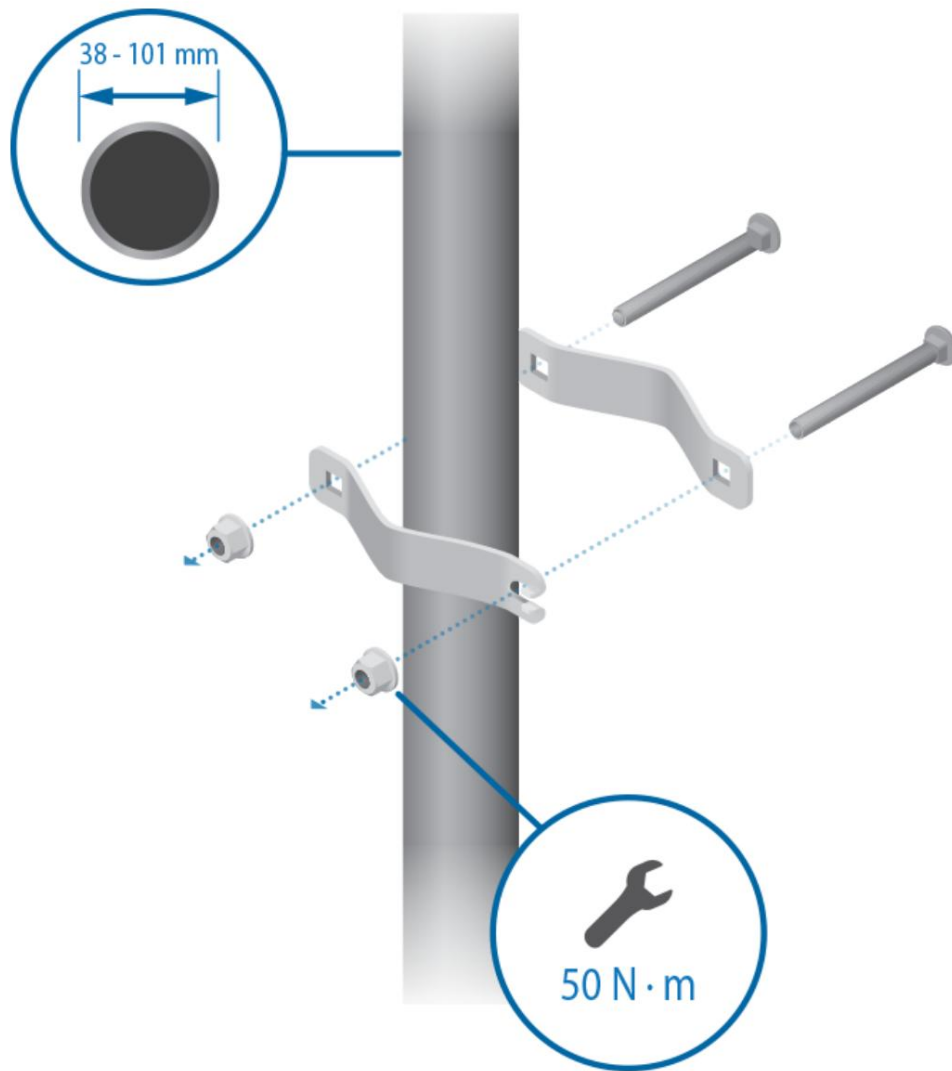
7.



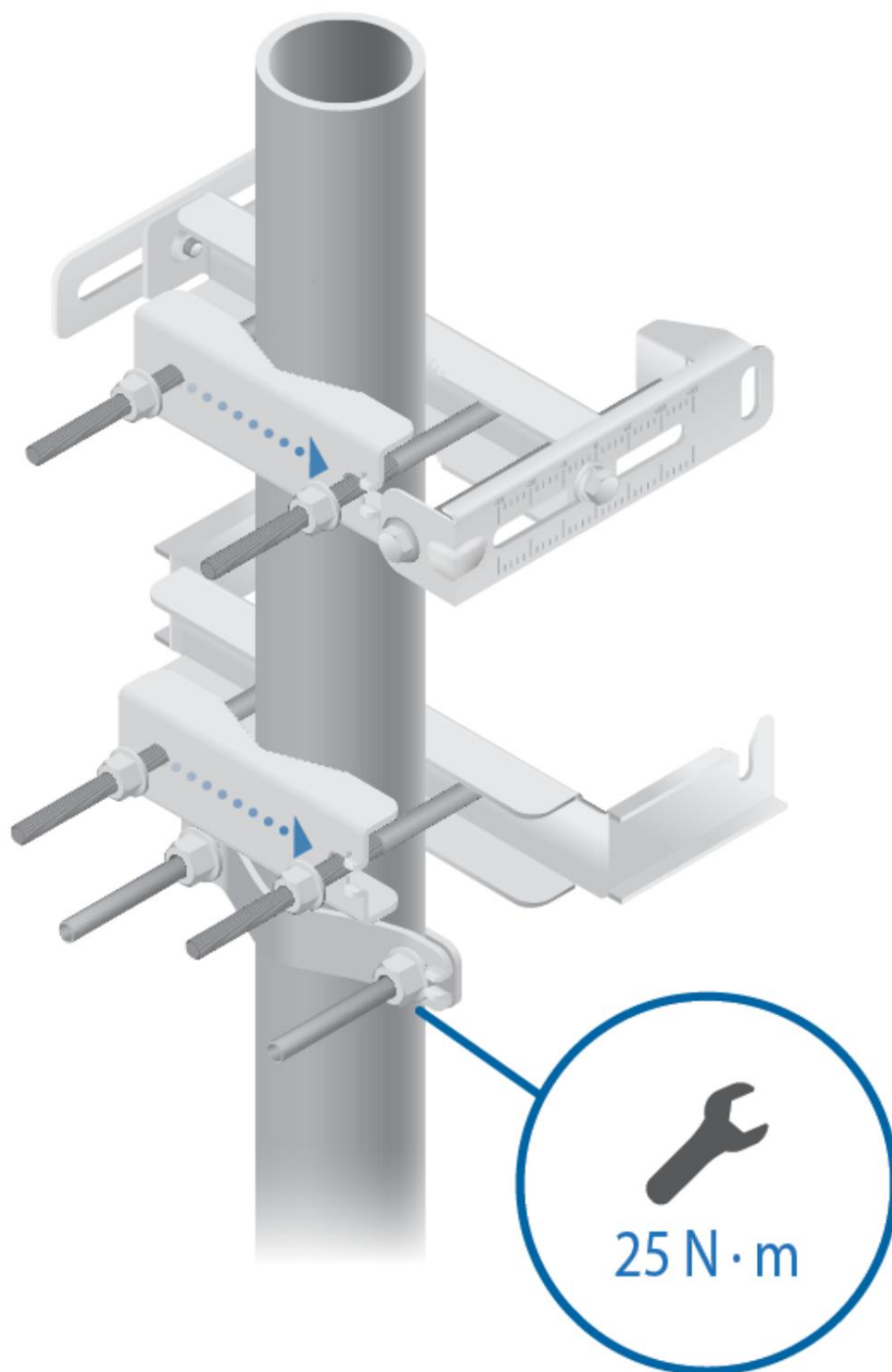
8.

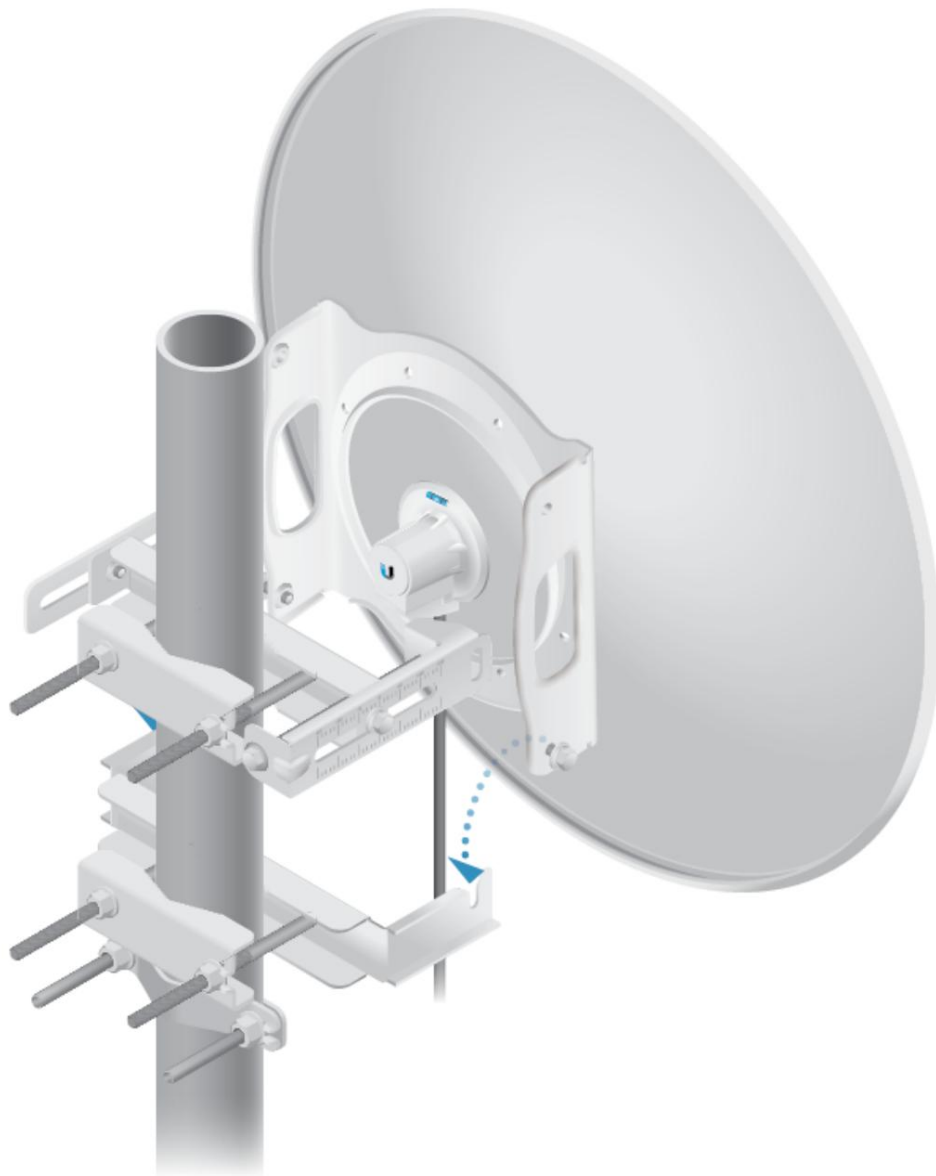


9.

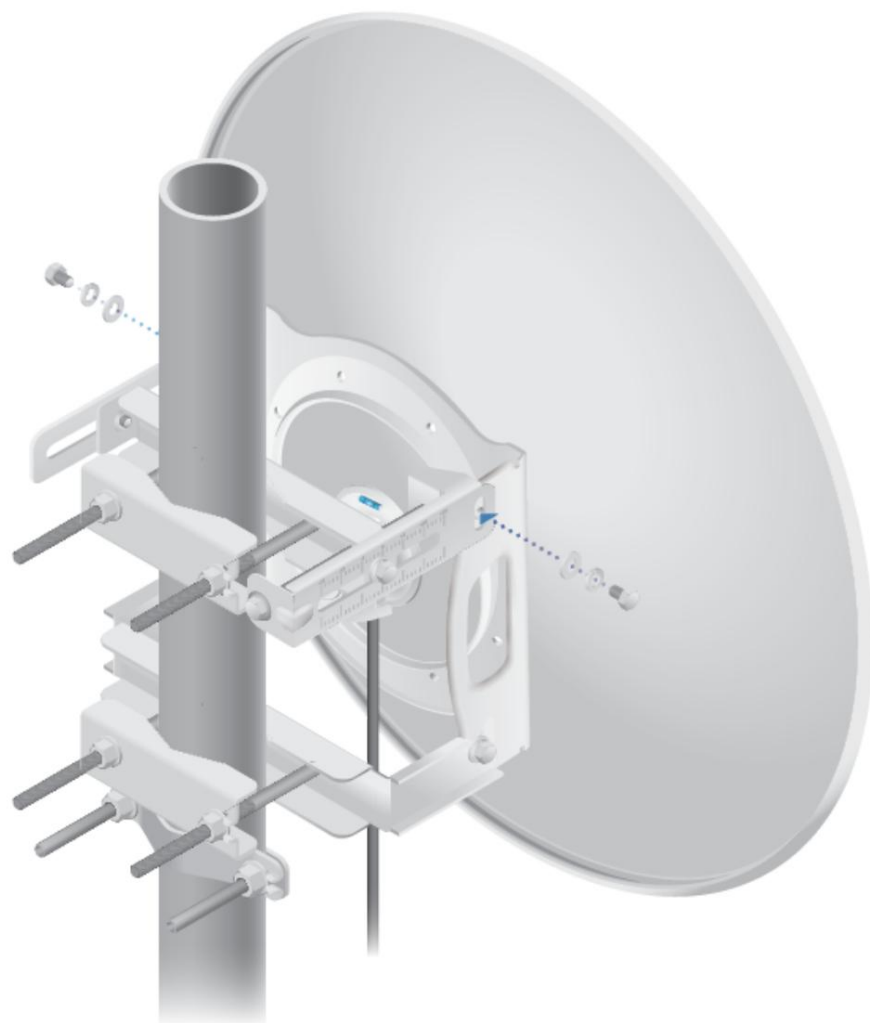


10.

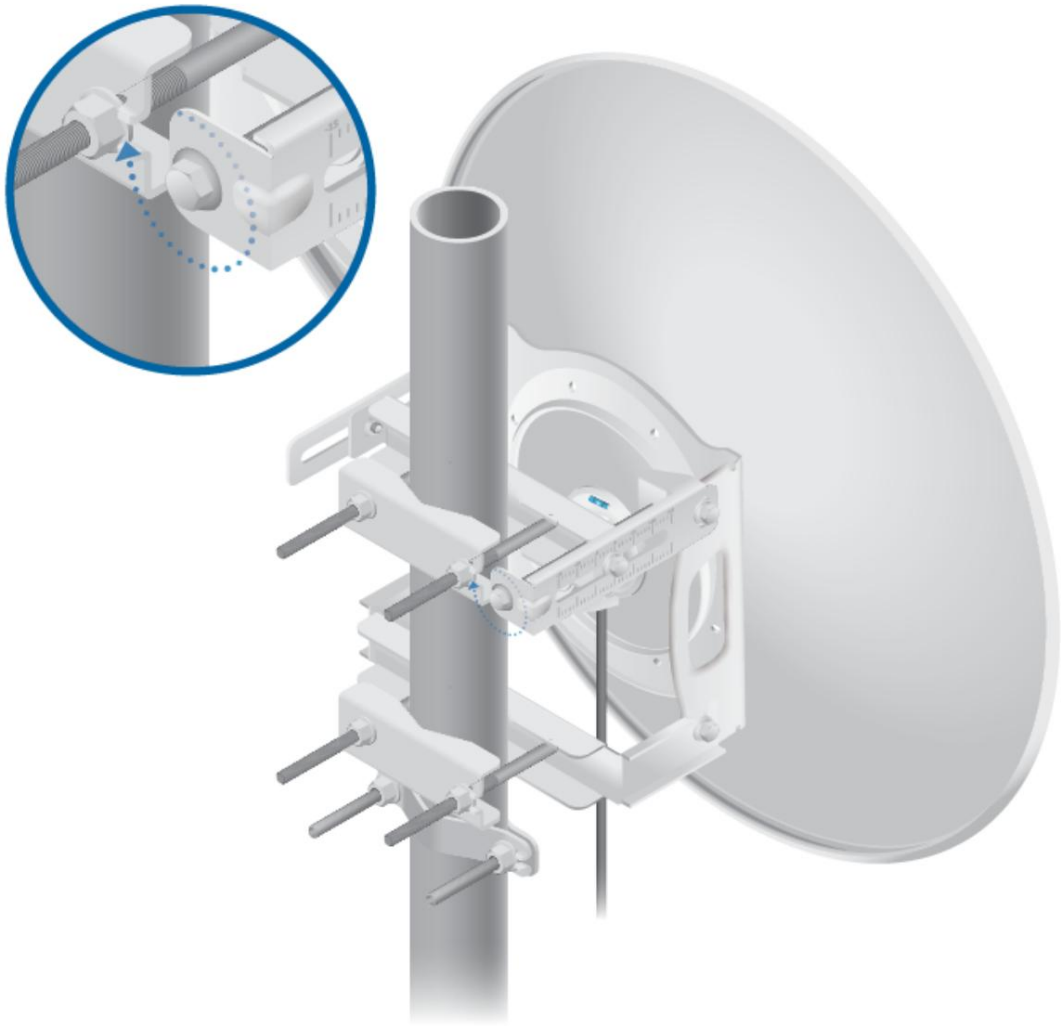




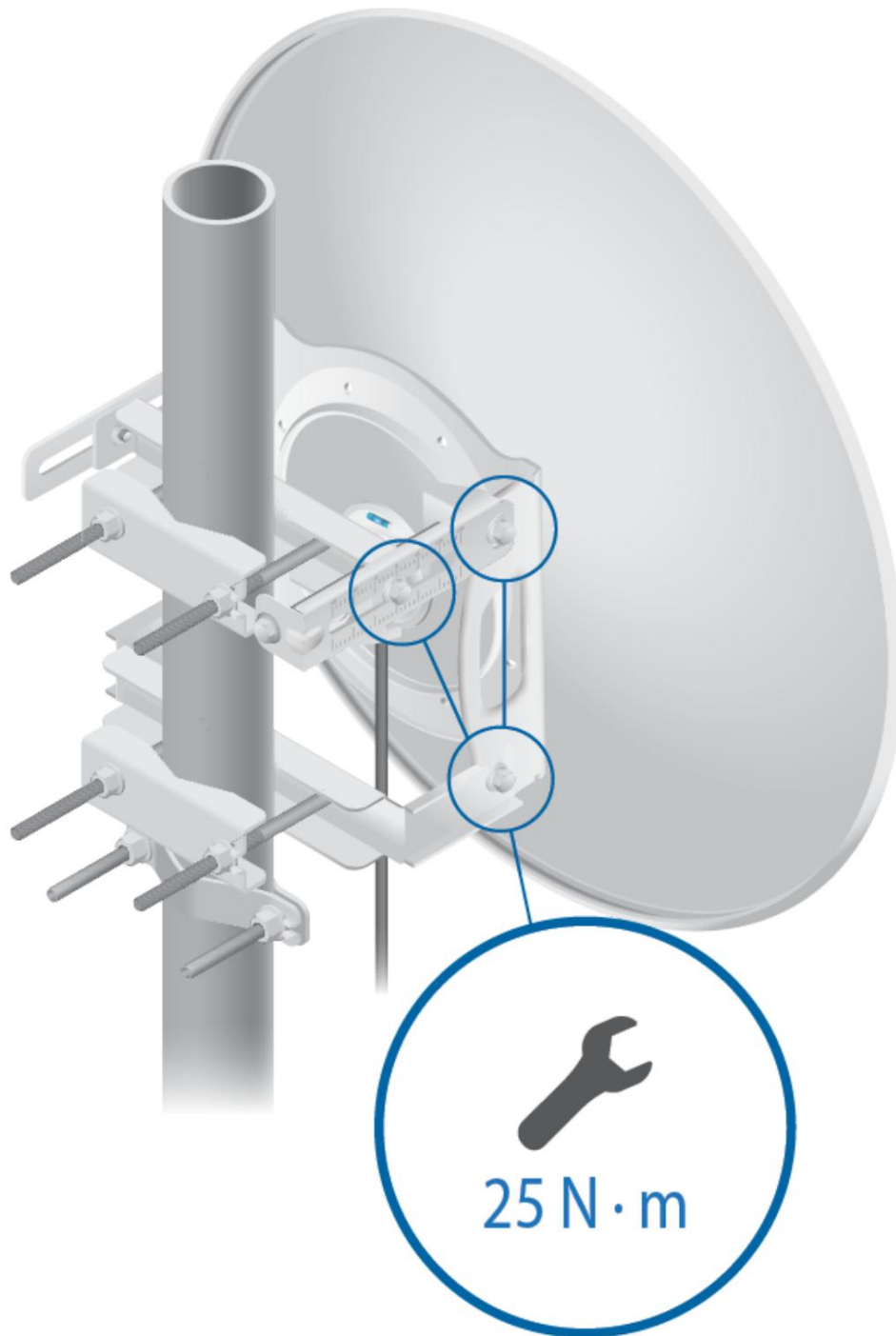
12.



13.



14.



## Power connection



**WARNING:** The port switch must meet the power specifications listed in this quick start guide.



O



Optional



## Access airOS

Connect to the airOS® configuration interface.

1. Check that your host is connected via Ethernet to the device.

2. Configure the Ethernet adapter on your host system with a static IP address on the 192.168.1.x subnet.
3. Launch the web browser. Type <https://192.168.1.20> in the address bar. Press Intro (PC) or Return (Mac).



4. Select your language and country. You must accept the Terms of Use to use the product. Click Continue.
5. Create a username and password. Confirm your new password and then then click Save.

The airOS settings interface will open allowing you to customize your settings as needed. For more information, see the user guide available at [ui.com/download/airmax-ac](http://ui.com/download/airmax-ac)

You can also manage your device using the Ubiquiti Internet Service Provider Application network management system. Configuration using the UISP™ application requires the U-Installer, which is sold separately.

## Installer Compliance Responsibility

Devices must be professionally installed and it is the responsibility of the professional installer to ensure that the device is operational in accordance with country specific regulatory requirements.

### Antenna

Select your antenna from the list. If the Calculate EIRP Limit option is enabled, the transmission output power is automatically adjusted to comply with applicable country regulations. In a custom antenna setup, the antenna gain is entered manually. Please note the antenna types and requirements listed below.

### Cable loss (if applicable)

Enter the cable loss in dB. The output power is adjusted to compensate for the losses between the radio and the antenna.

### Certified types of antenna

This radio transmitter FCC ID: SWX-PBE5AC / IC: 6545A-PBE5AC is approved by the FCC and ISED Canada to operate with the antenna types listed below with the maximum allowable gain indicated for each antenna type. Antenna types not included in this list or having a

gain higher than the maximum gain listed for that type are strictly prohibited for use with this device.

Antenna	Frequency	Gain
dish	5 GHz	29 dBi

## specs

PBE-5AC-620	
Dimensions	650 x 650 x 386 mm (25,6 x 25,6 x 15,2")
Weight	6,4 kg (14,11 lb)
Gain	29 dBi
network interface	(1) puerto Ethernet 10/100/1000
Material	UV stabilized plastic exterior
maximum power consumption	8,5W
maximum output power	24 dBm
Power supply	24V, 0.5A Gigabit PoE power (included)
feeding method	Passive PoE (pairs 4, 5+ for the outbound and 7, 8 for the return)
Wind resistance	200 km/h (125 mph)
wind load	872 N @ 200 km/h (196 lbf @ 125 mph)
Mounting	Pole mount (kit included)
Operating temperature	-40 to 70° C (-40° F to 158° F)
operating humidity	5 to 95% non-condensing
Shocks and vibrations	ETSI300-019-1.4
Certifications	CE, FCC, IC

Operating frequency (MHz)		
All over the world	5150 - 5875	
EE. UU. / CA	U-SO-1	5150 - 5250
	U-NII-2A	5250 - 5350
	U-NII-2C	5470 - 5725
	U-SO-3	5725 - 5850

## safety instructions

1. Read, follow and save these instructions.
2. Pay attention to all warnings.
3. Only use the devices or accessories indicated by the manufacturer.



**WARNING:** Do not use this product in a location where it may be submerged in water.



**WARNING:** Avoid using this product during a lightning storm. There is a remote possibility of an electrical discharge caused by lightning.

## electrical safety information

1. It is mandatory to comply with the current, frequency and voltage requirements indicated on the manufacturer's label. Connection to a power source other than those specified may result in malfunction, equipment damage, or fire hazard if limitations are not followed.
2. This equipment contains no operator-serviceable parts. Only a qualified service technician should provide services.
3. This equipment is supplied with a detachable power cord that has an integral safety ground wire designed to be connected to a safety ground. a. Do not substitute the power cord with one other than the approved type provided.

Never use an adapter plug to connect to a two-wire outlet, as it will break the continuity of the ground wire.

- b. The equipment requires the use of the ground wire as part of the safety certification. Modification or misuse can create a shock hazard, which could cause serious injury or death.
- c. If you have any questions about the installation, contact an electrician

qualified person or the manufacturer before connecting the equipment.

- d. The indicated AC adapter provides a safety ground. For installation in a building, adequate short-circuit back-up protection must be provided.

and. A protective connection must be installed in accordance with national wiring rules and regulations.

## limited warranty

[ui.com/support/warranty](http://ui.com/support/warranty)

The limited warranty requires arbitration to resolve disputes on a case-by-case basis and, where appropriate, specifying arbitration instead of jury trials or class actions.

## Compliance

### FCC

Changes or modifications not expressly approved by the party responsible for compliance could void the user's authority to operate the equipment.

This device complies with part 15 of the FCC Rules. Operation is subject to the following two conditions.

1. This device may not cause harmful interference.
2. This device must accept any interference received, including interference that may cause undesired operation.

This equipment has been tested and found to comply with the limits for a Class A digital device, pursuant to part 15 of the FCC Rules. These limits are designed to provide acceptable protection against harmful interference when the equipment is operated in a commercial environment. This equipment generates, uses, and can radiate radio frequency energy and, if not installed and used in accordance with the instruction manual, may cause harmful interference to radio communications. Operation of this equipment in a residential area is likely to cause harmful interference, in which case the user will be required to correct the interference at his own expense.

The FCC has approved this radio transmitter.

## ISED Canada

### CAN ICES-3(A)/NMB-3(A)

This device complies with ISED Canada licence-exempt RSS standard(s). Operation is subject to the following two conditions:

1. This device may not cause interference.
2. This device must accept any interference, including interference that may cause undesired operation of the device.

ISED Canada has approved this radio transmitter.

The device for operation in the 5150-5250 MHz band is intended for indoor use only to reduce the possibility of harmful interference to co-channel mobile satellite systems.

## IMPORTANT NOTE

### Radiation Exposure Statement:

- This equipment complies with radiation exposure limits set forth for an uncontrolled environment.
- This equipment should be installed and used with a minimum distance of 137 cm between the radiator and your body.
- This transmitter must not be co-located or used in conjunction with any other antenna or transmitter.

## Australia and New Zealand



Warning: This equipment is compliant with Class A of CISPR 32. In a residential environment, this equipment may cause radio interference.

## Brazil



**Note:** This equipment is not entitled to protection against harmful interference and may not cause interference in authorized systems.

## CE marked

The CE marking of this product indicates that the product complies with all applicable directives.



list of countries



AT	BE	BG	CY	CZ	DE	DK	EE	EL	ES	FI	FR	HR	HU						
IE	IT	LV	LT	LU	MT	NL	PL	PT	RO	SE	SI	SK	UK						

Members with broadband fixed wireless access are highlighted in blue



**Note:** This device complies with the maximum transmit power limit per ETSI regulations.

The following shall apply to products operating in the 5 GHz frequency range:



**Note:** This device is only suitable for indoor use when operating in the frequency range of 5150 - 5350 MHz in all member states.



**Note:** Operation in the 5.8 GHz frequency band is prohibited in member states with fixed broadband wireless access. The rest of the listed countries can use the 5.8 GHz frequency band.

WEEE Compliance Statement

Declaration of conformity

## online resources



© 2022 Ubiquiti Inc. All rights reserved.