



Package content



UniFi Switch



Rack mount brackets
(qty: 2)



Screw Clamps (8)



Clamping screws (4)



Cage Nuts (Qty: 4)



Power cord

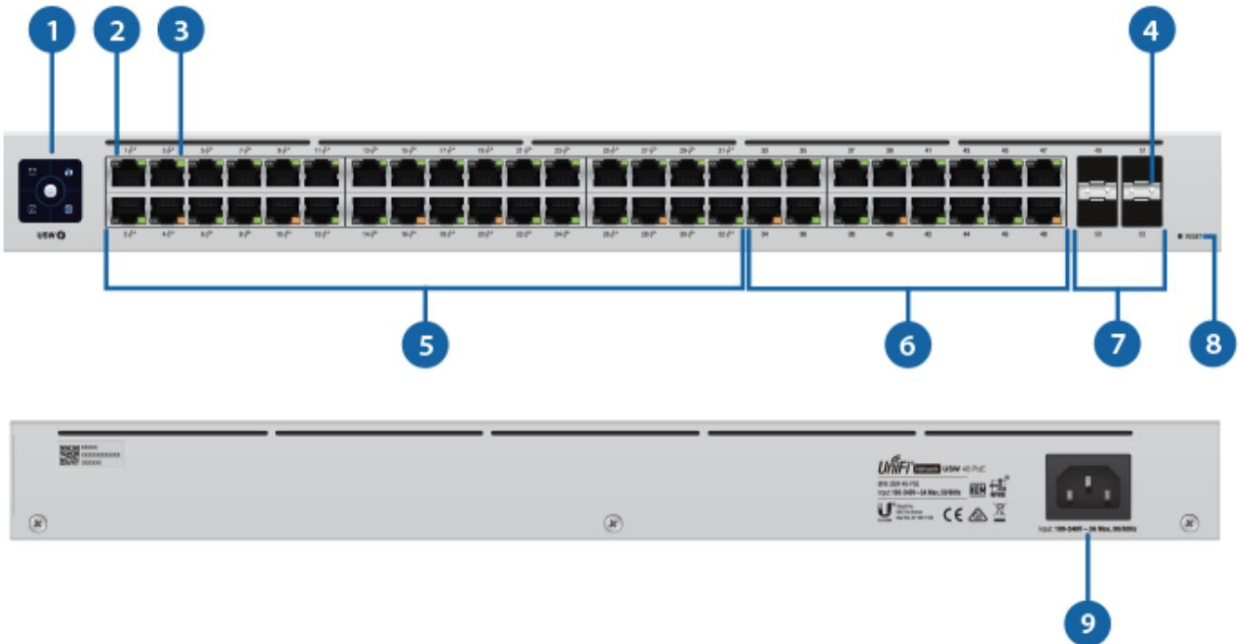
System Requirements

- Linux, Mac OS X or Microsoft Windows
- 7/8/10 Java Runtime Environment 1.6 (1.8 or later is recommended)
- Web browser: Google Chrome (other browsers may have limited functionality).
- UniFi Controller Software v5.12.x or later, available at: ui.com/download/unifi



IMPORTANT: We strongly recommend using power regulation and supporting an uninterruptible power supply to prevent equipment damage due to local AC power stability issues.

Device Overview



1 Touch screen

startup animation	Starting.
fixed white light	Factory defaults, pending approval.
steady blue light	Network approval successful and correct operation.
location animation	This indicates you have clicked Locate in the UniFi controller software. The software will also show the location of the device on the map.

2 RJ45 PoE LEDs (ports 1 - 32)

disabled	Sin PoE
Amber	PoE 802.3af/at

3 RJ45 Speed/Link/Activity LED (Ports 1 - 48)

disabled	not connected
Amber	Link established at 10/100 Mbps Blinking indicates activity



USW-48-POE Quick Start Guide

	Blinking indicates activity
4 SFP Speed/Link/Activity LED (Ports 49 - 52)	
disabled	not connected
Green	Link established at 1 Gbps Blinking indicates activity
5 RJ45 (ports 1 - 32)	
RJ45 ports support 10/100/1000 Ethernet connections and an 802.3af/at PoE output.	
6 RJ45 (ports 33 - 48)	
RJ45 ports support 10/100/1000 Ethernet connections.	
7 SFP (ports 49 - 52)	
The SFP ports are hot-swappable and support 1 Gbps connections.	
8 Reset button	
This button has two functions on the UniFi Switch: <ul style="list-style-type: none">• Reset – Quickly press and release the Reset button.• Restore Factory Default Settings: Press and hold the Reset button for more than five seconds.	
9 power port	
Connect the included power cord to the power port.	

installation requirements

- Phillips screwdriver
- Standard size, 19" wide rack with a minimum 1U height
- For indoor applications, use Category 5 (or higher) UTP cabling certified for indoor use.
- For outdoor applications, Category 5 (or higher) shielded cabling must be used for all Ethernet connections and must be connected to the AC ground of the power supply.



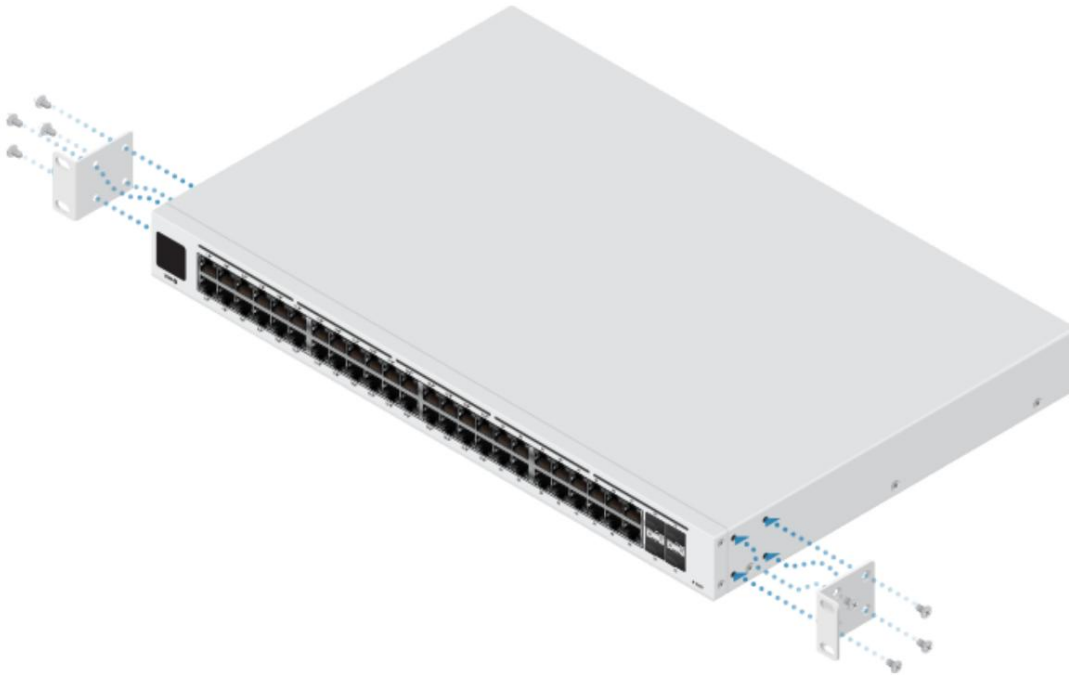
electrostatic discharge phenomena with UniFi's industrial-grade shielded Ethernet cable. For more details, visit: ui.com/toughcable



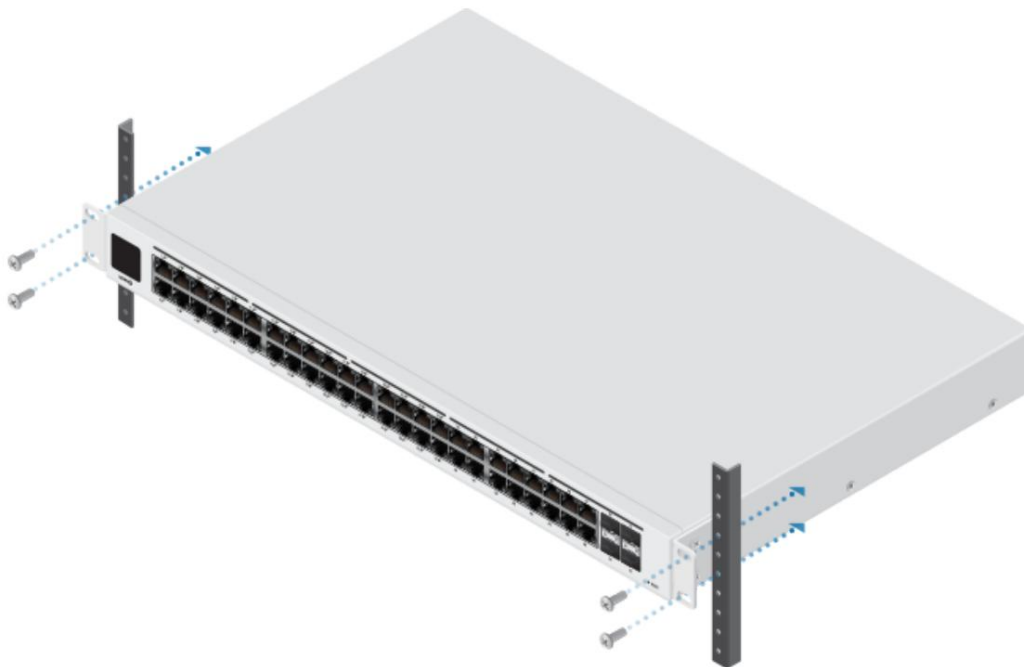
Note: Although the wiring can be run outside, the UniFi Switch must be stored inside a protective case.

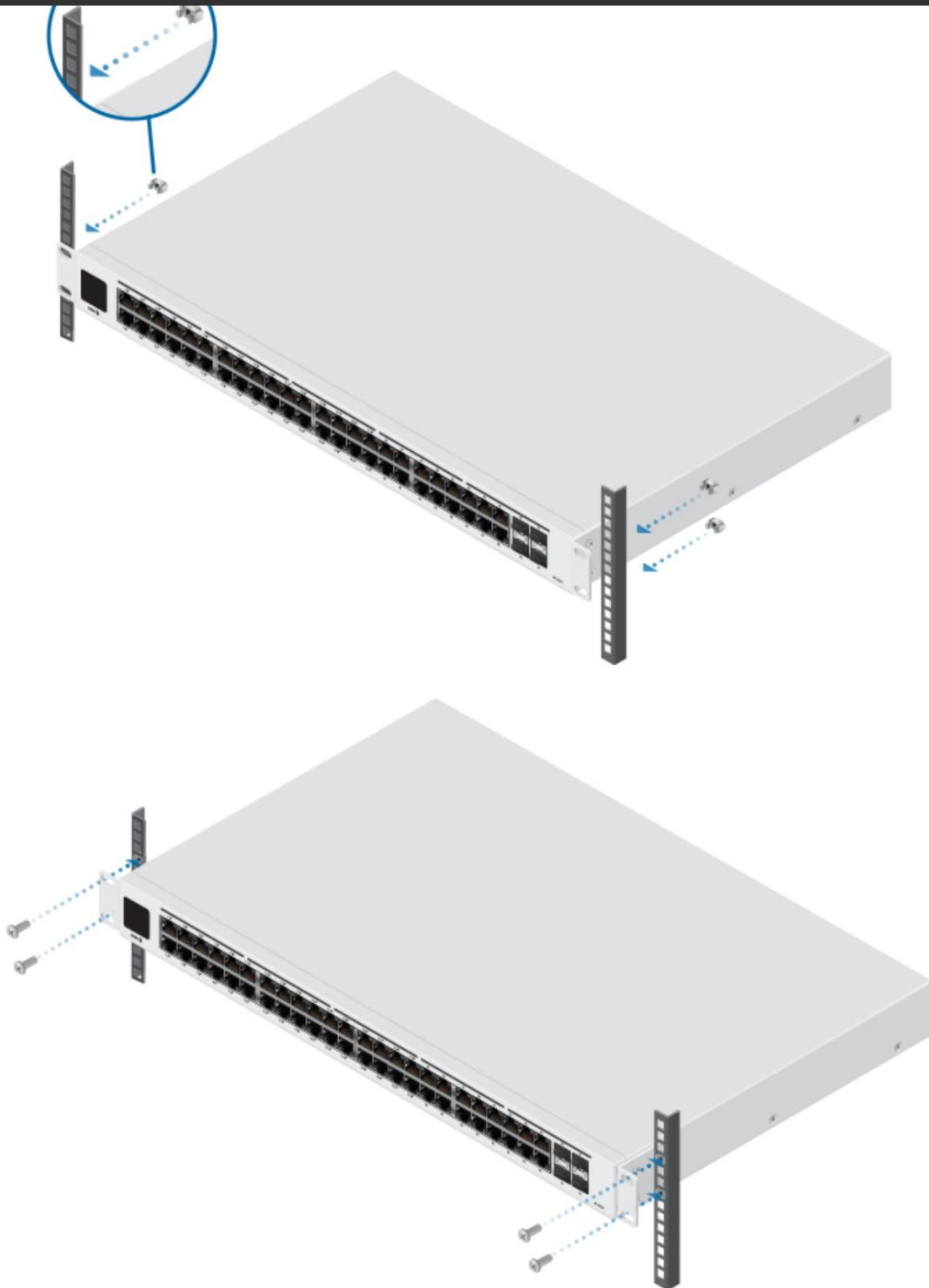
Device installation

1.



2.





Power connection

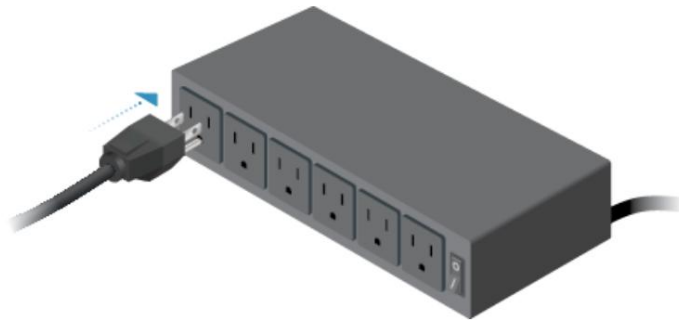
1.



USW-48-POE Quick Start Guide



2.



ethernet connection



Note: If you are connecting PoE devices, look at the display to determine the available PoE wattage.

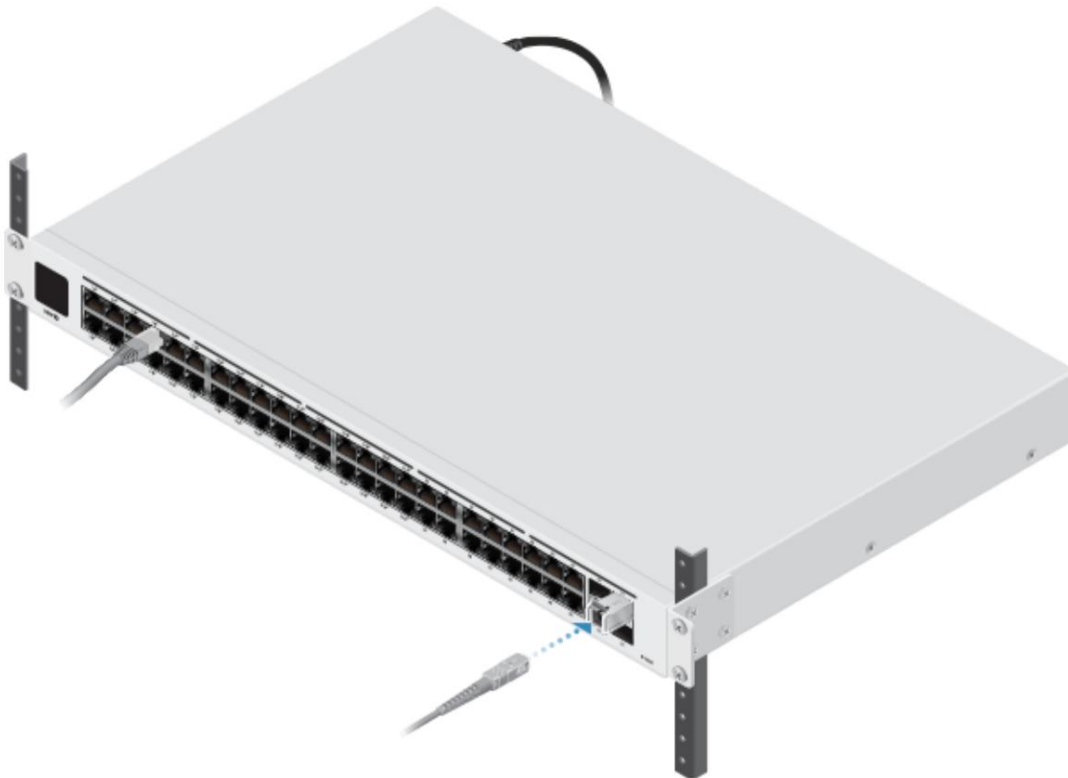
SFP connection

1.





3.



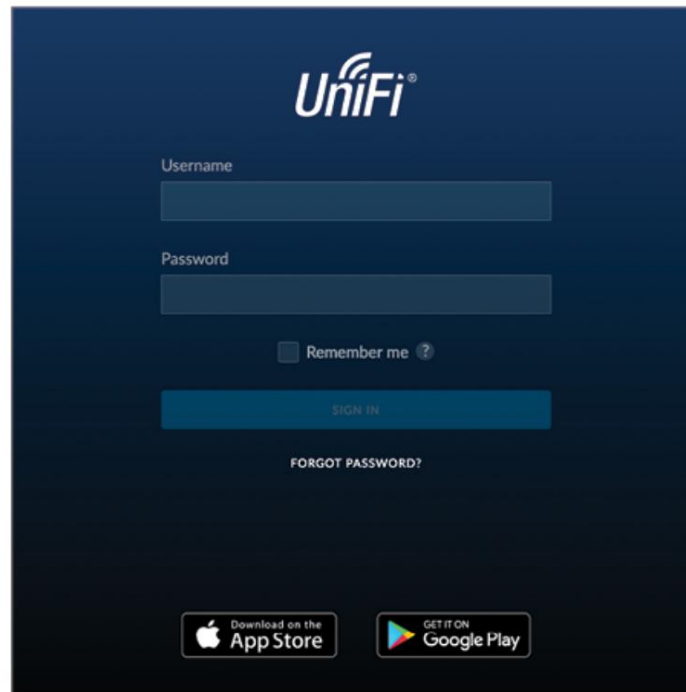
For more information on compatible fiber SFP modules, visit: ubnt.link/UniFi_SFP_DAC_Compatibility

Software installation

Download and install the latest version of the UniFi driver software at ui.com/download/unifi and follow the instructions on the screen.



Once you have installed the software and run the UniFi Setup Wizard, a login screen for the UniFi Controller management interface will appear. Enter the administrator name and password you created and click Sign In.



You can manage your wireless network and view network statistics through the UniFi Controller's management interface.

To deploy the UniFi Switch, go to ["UniFi Switch Deployment"](#).

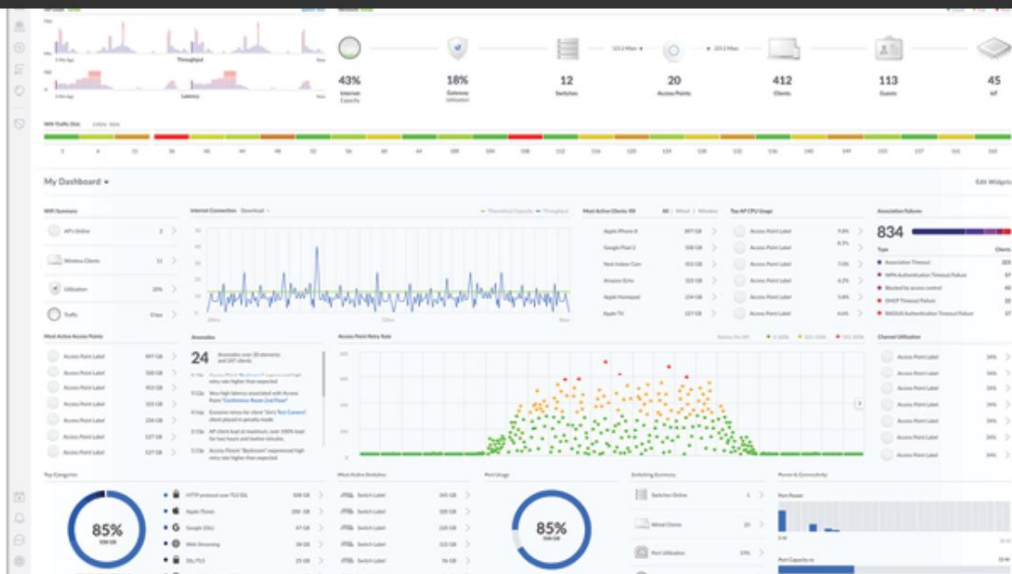
For information on setting up and using the UniFi Controller software, see the user guide located on our website: ui.com/download/unifi

Implementation of the UniFi switch

1. From the UniFi controller panel, click Devices on the left menu bar.



USW-48-POE Quick Start Guide



2. On the Devices screen, locate the UniFi Switch in the list of devices in the Model column. To approve the UniFi Switch, click Adopt.

The screenshot shows the 'Devices' screen in the UniFi Network Controller. The table lists various devices, including a USG, several US-XG switches, and multiple US16P-150W and US8P-150W switches. The 'USW-48-POE' switch is listed at the bottom with a status of 'PENDING ADOPTION'. The table has columns for Device Name, IP Address, Status, Model, Version, and Uptime.

DEVICE NAME	IP ADDRESS	STATUS	MODEL	VERSION	UPTIME
USG	10.2.50.21	CONNECTED	UniFi Security Gateway 4P	4.4.18.5052172	73d 17h 52m 34s
US-XG	192.168.1.155	CONNECTED (1000 PDX)	UniFi Switch-XG 4P	4.0.5.9550	55m 40s
US-XG	192.168.1.35	CONNECTED (1000 PDX)	UniFi Switch-XG 16X	4.0.1.9421	11d 3h 57m 49s
US16P-150W	192.168.1.176	CONNECTED	UniFi Switch 16 POE-150W	4.0.5.9550	54m 32s
US8P-150W	192.168.1.31	CONNECTED	UniFi Switch 8 POE-150W	4.0.1.9421	35d 22h 16m 38s
US8P-150W	192.168.1.248	CONNECTED	UniFi Switch 8 POE-150W	4.0.5.9550	56m 14s
US8P-60W	192.168.1.45	CONNECTED	UniFi Switch 8 POE-60W	4.0.5.9550	12m 47s
AccessPoint77049f	192.168.1.152	PENDING ADOPTION	UniFi Switch 48 POE	4.0.5.9550	1h 27m 16s

3. The screen will turn blue to confirm successful deployment.

specs

USW-48-POE	
Dimensions	442,4 x 285 x 43,7 mm (17,42 x 11,22 x 1,72")
Weight	4,52 kg (9,97 lb)



USW-48-POE Quick Start Guide

Interfaces	
Red	48 10/100/1000 RJ45 ports 4 1G SFP Ethernet ports
Management	Ethernet and bandwidth
feeding method	100-240 V AC, 50/60 Hz, universal input
Power supply	CA/CC, interno, 240 W
Supported voltage range	From 100 to 240 V AC
Maximum power consumption (does not include PoE output)	45W
Luces LED	
RJ45 data port	PoE; speed/link/activity
SFP data port	Link/Activity
ESD/EMP protection	Air: ± 16 kV, contact: ± 12 kV
Shocks and vibrations	ETSI300-019-1/4 standard
Operating temperature	-5 to 40° C (23° F to 104° F)
operating humidity	10 to 90% non-condensing
Certifications	CE, FCC, IC

PoE	
Interfaces the PoE	
Ports 1-32	POE+ IEEE 802.3af/at (Tomas: 1, 2+; 3, 6-)
Maximum PoE Wattage per port per PSE	
802.3at	32W
802.3af voltage range mode	44-57 V
802.3at voltage range mode	50-57 V

safety instructions

1. Read, follow and save these instructions.
2. Pay attention to all warnings.
3. Only use the devices or accessories indicated by the manufacturer.



WARNING: Lack of adequate ventilation may result in a fire hazard.
Keep at least 20mm clearance next to the ventilation holes for proper ventilation.



WARNING: Do not use this product in a place where it can be submerged in water.



WARNING: Avoid using this product during a lightning storm. There is a remote possibility of an electrical discharge caused by lightning.

electrical safety information

1. It is mandatory to comply with the current, frequency and voltage requirements indicated on the manufacturer's label. Connection to a power source other than those specified may result in malfunction, equipment damage, or fire hazard if limitations are not followed.
 2. This equipment contains no operator-serviceable parts. Only a qualified service technician should provide services.
 3. This equipment is supplied with a detachable power cord that has an integral safety ground wire designed to be connected to a safety ground.
 - a. Do not substitute the power cord with one other than the approved type provided. Never use an adapter plug to connect to a two-wire outlet, as it will break the continuity of the ground wire.
 - b. The equipment requires the use of the ground wire as part of the safety certification. Modification or misuse can create a shock hazard, which could cause serious injury or death.
 - c. If you have any questions about the installation, contact an electrician

qualified person or the manufacturer before connecting the equipment.
 - d. The indicated AC adapter provides a safety ground. For installation in a building, adequate short-circuit back-up protection must be provided.
- and. A protective connection must be installed in accordance with national wiring rules and regulations.

limited warranty

ui.com/support/warranty

The limited warranty requires arbitration to resolve disputes on a case-by-case basis and, where appropriate, specifying arbitration instead of jury trials or class actions.

Compliance

FCC

Changes or modifications not expressly approved by the party responsible for compliance could void the user's authority to operate the equipment.



1. This device may not cause harmful interference, and 2. This device must accept any interference, including interference that may cause undesired operation.

This equipment has been tested and found to comply with the limits for a Class A digital device, pursuant to Part 15 of the FCC Rules. These limits are designed to protect the equipment, to the extent possible, from harmful interference when it is operated in a commercial environment. This equipment generates, uses, and can radiate radio frequency energy and, if not installed and used in accordance with the instruction manual, may cause harmful interference to radio communications. Operation of this equipment in a residential area is likely to cause harmful interference in which case the user will be required to correct the interference at his own expense.

ISED from Canada

CAN ICES-3(A)/NMB-3(A)

Australia and New Zealand



Warning: This equipment complies with Class A of CISPR 32. In a residential environment, it may cause radio interference.

CE marked

The CE marking of this product indicates that the product complies with all applicable directives.



[WEEE Compliance Statement](#)

[Declaration of conformity](#)

[online resources](#)



USW-48-POE Quick Start Guide



© 2021 Ubiquiti Inc. All rights reserved.
