

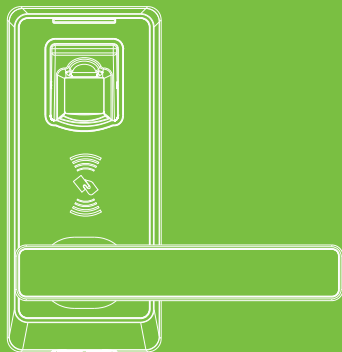
# USER MANUAL

ML10 / PL10 series

---

Version: 2.2

Date: Jan. 2019



# Table of Contents

<b>Read Before Use.....</b>	<b>4</b>
Safety Precautions.....	4
Structure .....	5
<b>Basic Function .....</b>	<b>6</b>
User Introduction .....	6
Button Function .....	6
Lock Indication .....	7
Lock Initialization .....	8
Using Mechanical Key .....	9
9V External Battery .....	10
Register First Administrator.....	11
Register Other Administrators.....	12

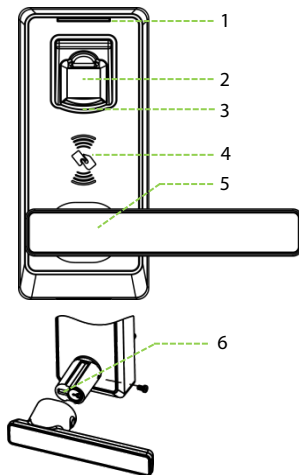
Register Normal User .....	13
Register Temporary User.....	14
Delete Temporary User Group .....	15
Delete Normal User Group.....	16
Delete Admin Group.....	17
Enable/Disable Normally Open Mode.....	18
Disabling Normally Open Mode:.....	18

## Safety Precautions

1. Factory setting of all new locks allows any verification to unlock them.
2. The lock is equipped with mechanical keys for manually unlocking. Store the mechanical key in a safe place.
3. Four alkaline AA batteries (not included) are required to power on the lock, Non-alkaline and rechargeable batteries **ARE NOT RECOMMENDED**.
4. If the lock does not have any activity for ten seconds it will go into sleep mode.
5. For best results, place the fingerprint properly onto the fingerprint sensor.

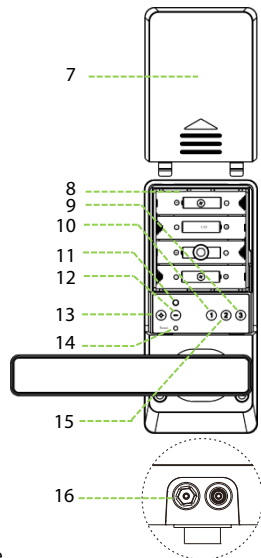
# Structure

Front view



- 1 LED
- 2 Fingerprint Sensor
- 3 Sensor Holder
- 4 ID Card Swiping Area
- 5 Handle
- 6 Mechanical Key Hole
- 7 Battery Box Cover
- 8 Battery Area
- 9 Button ③ / Temporary User
- 10 Button ① / Admin user
- 11 Back LED
- 12 Button ⊖ / Delete user
- 13 Button ⊕ / Add user
- 14 Reset Button
- 15 Button ② / Normal User
- 16 9V Emergency Battery Interface

Rear / Bottom view



# Basic Function

## User Introduction

Group	Verification Mode	Function
Administrator	20 (Fingerprint:10, ID Card: 10)	Add/delete fingerprint or ID card; Enable Normally Open (NO) mode; Unlock the door
Normal User	120 (Fingerprint:60, ID Card: 60)	Unlock the door; Enable NO mode
Temporary User	40 (Fingerprint:20, ID Card: 20)	Unlock the door; Enable NO mode

## Button Function

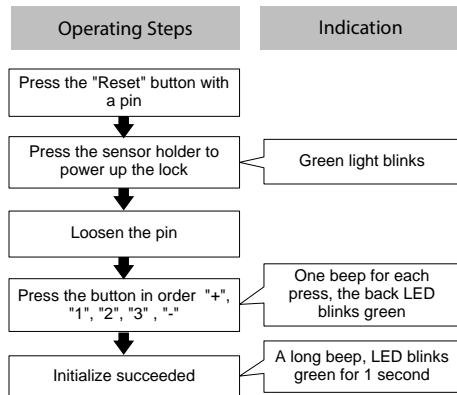
Buttons	Function
⊕	Add Users
⊖	Delete Users
①	Administrator User Group and Enable NO mode
②	Normal User Group and Enable NO mode
③	Temporary User Group and Enable NO mode

## Lock Indication

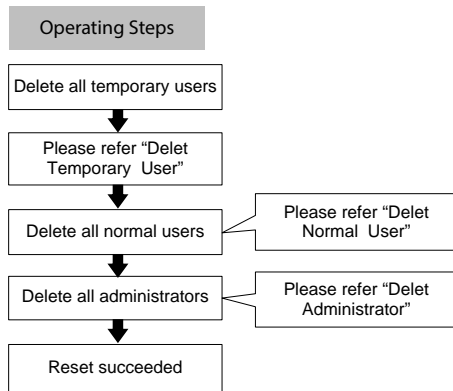
Lock Status	Indication
Successful Operation	Single beep and green light blinks
Failed Operation	Two beeps and red light blinks
Low battery	Seven beeps and red light blinks 7 times
Unlock	One beep and the lock makes a rolling sound for the first time, which indicates the door is unlocked.
Lock	The lock makes a rolling sound for the second time, which indicates the door is locked.

# Lock Initialization

## Method 1



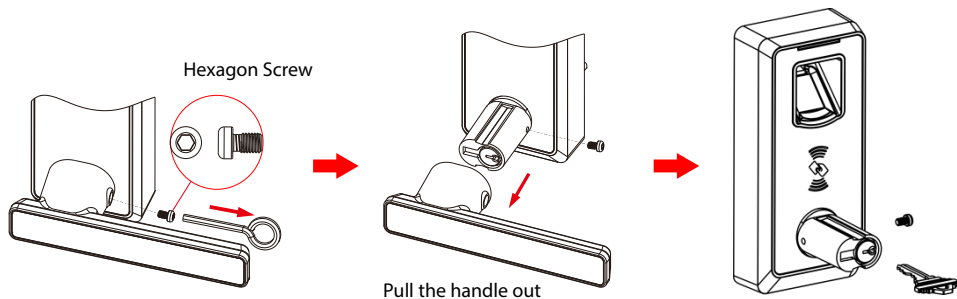
## Method 2



**Note:** The lock will be restored to factory default settings after initialization, and the door can be opened with any fingerprint or ID card.



## Using Mechanical Key

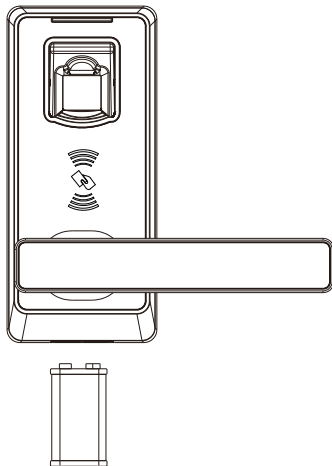


### Step:

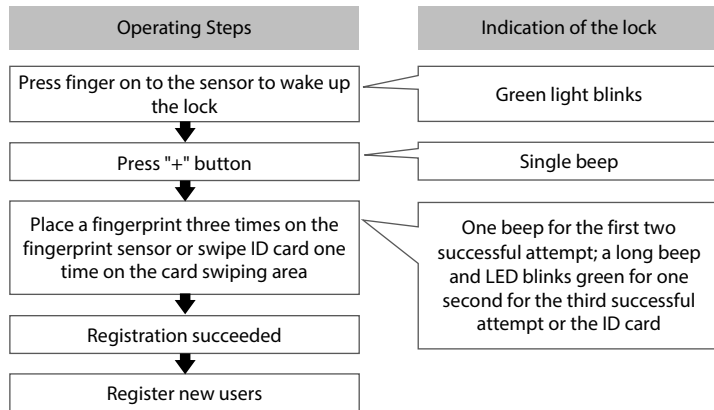
1. Using hex wrench, remove the screw.
2. Insert the key and unlock.

## 9V External Battery

9V external battery is used to operate the lock when the battery is fully discharged.



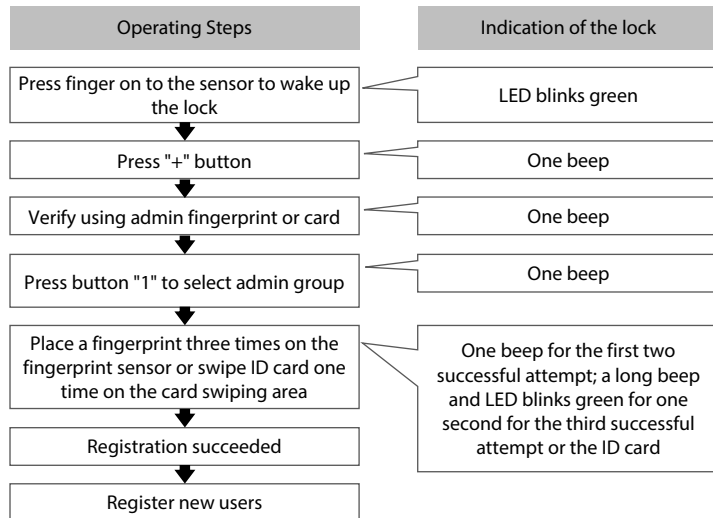
# Register First Administrator



**Note:** 1. The first registered user (fingerprint or ID card) will be the first administrator automatically in default setting.

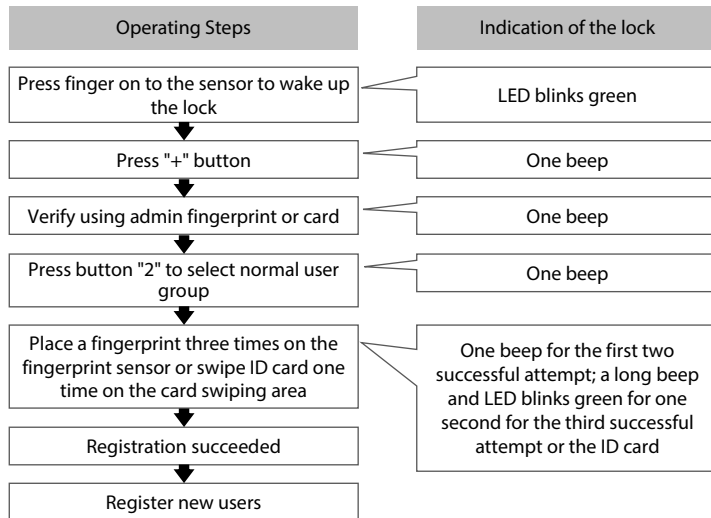
2. Admin group supports 20 users (10 for fingerprints and 10 for ID cards); you can still register 19 new administrators in the next step.

## Register Other Administrators



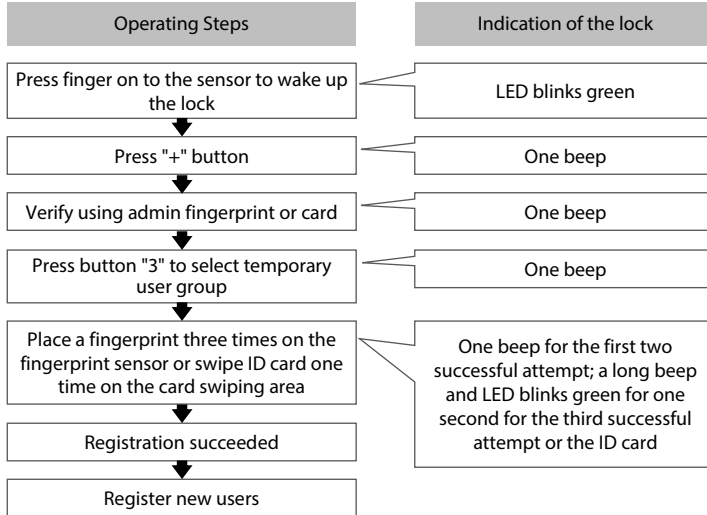
**Note:** Admin group supports 20 users; you can still register 19 new administrators in this step.

## Register Normal User



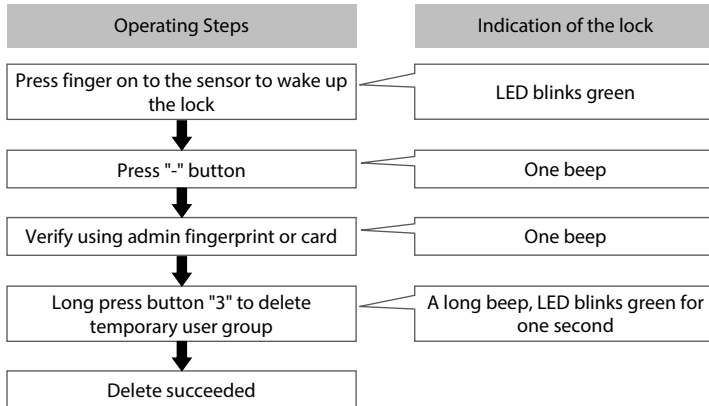
**Note:** Normal user group supports 120 users (60 for fingerprints and 60 for ID cards).

# Register Temporary User



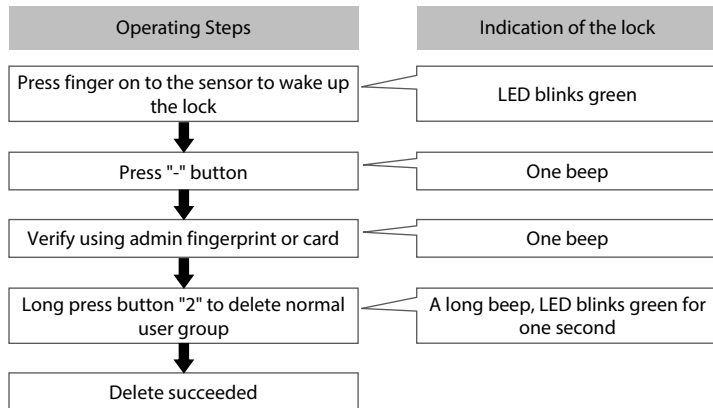
**Note:** Temporary user group supports 40 users (20 for fingerprints and 20 for ID cards).

## Delete Temporary User Group



**Note:** Deleting operation is only valid for groups.

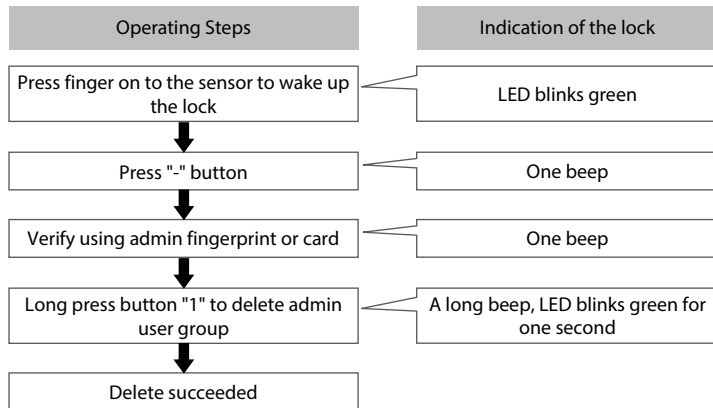
## Delete Normal User Group



**Note:** Deleting operation is only valid for groups.

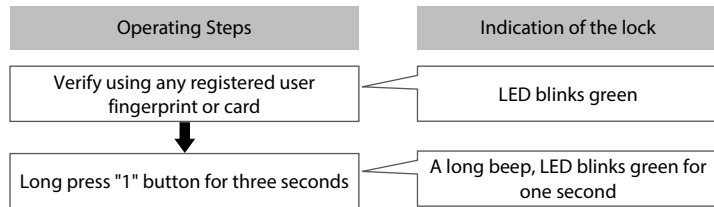


## Delete Admin Group



**Note:** Deleting operation is only valid for groups.

## Enable/Disable Normally Open Mode



**Note:** Deleting operation is only valid for groups.

## Disabling Normally Open Mode:

Verifying using any registered fingerprint or card on lock will disable Normally Open Mode.

