



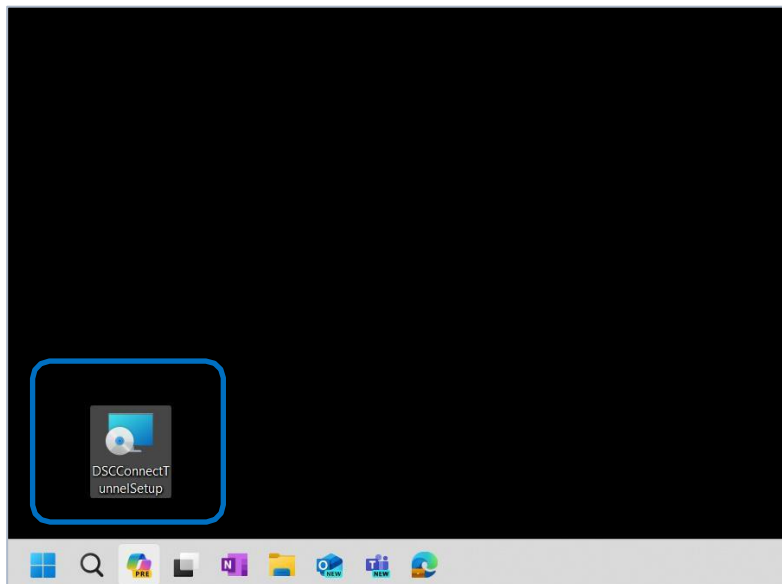
DSC Connect – Upload/Download

Step 1 [Download the DSC Connect Modem \(Click Here\)](#)

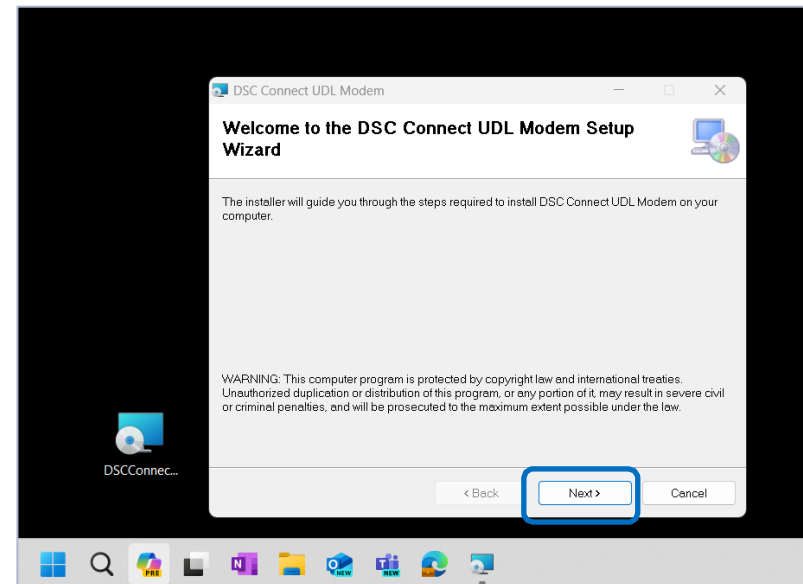
Double-click the **DSCConnectTunnelSetup.msi** installation file (Pic. 1).

Note: If Microsoft Defender tries to prevent the installation, click **More info** > **Run anyway**.

Press **Next** to proceed (Pic. 2).



Pic. 1



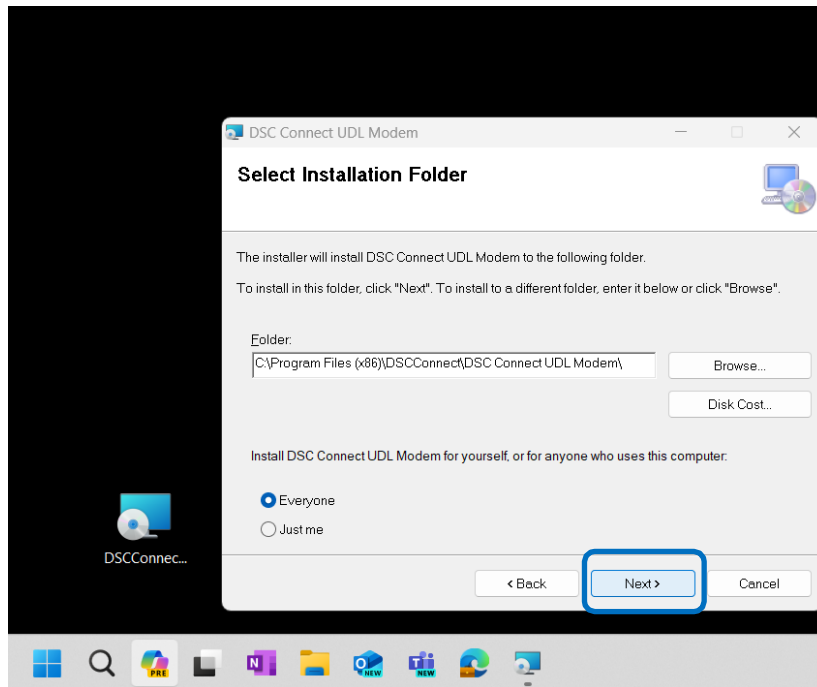
Pic. 2

Step 2

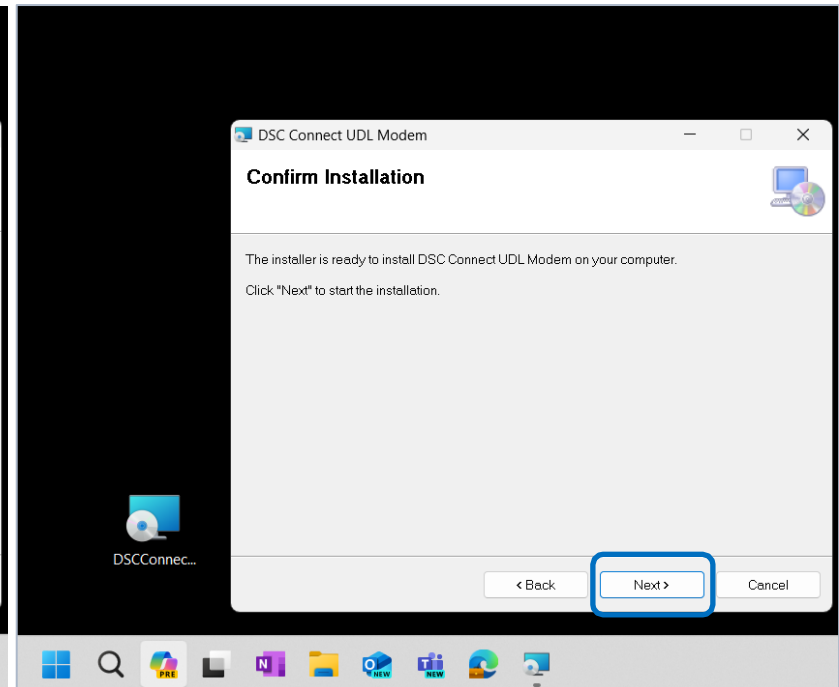
Press **Next** without changing the preconfigured installation location (Pic. 3).

Then start the installation (Pic. 4).

Note: Do not interrupt the installation progress.



Pic. 3



Pic. 4



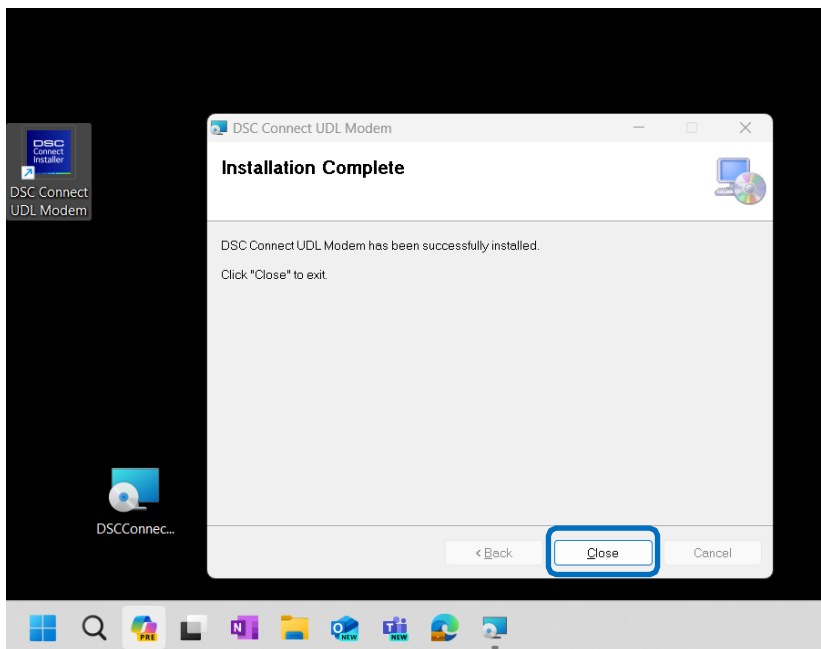
Software Modem Installation

Step 3

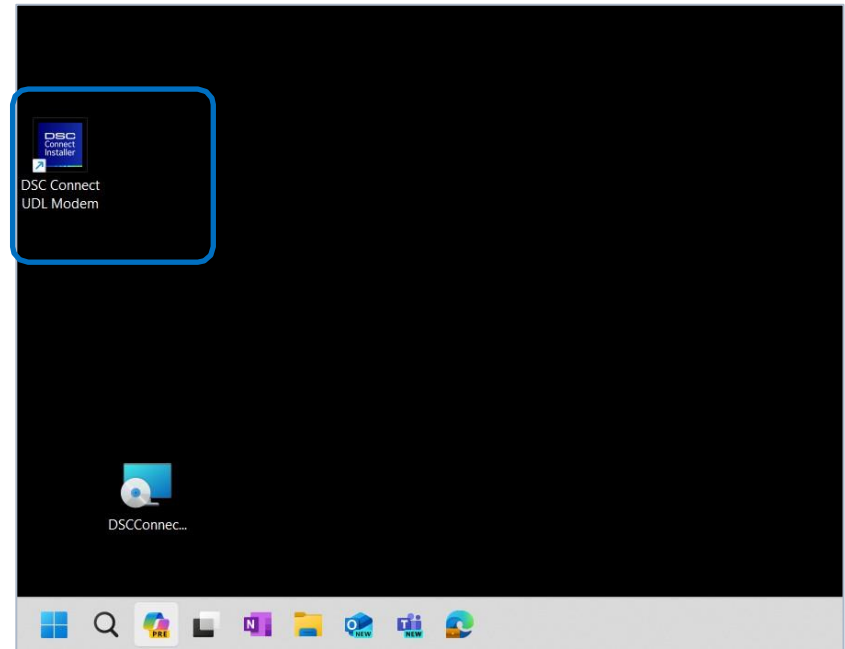
After the installation is complete, press the **Close** button to exit the wizard (Pic. 5).

A shortcut named **DSC Connect UDL Modem** should appear on your desktop (Pic. 6).

Open the program by double-clicking the shortcut.



Pic. 5



Pic. 6

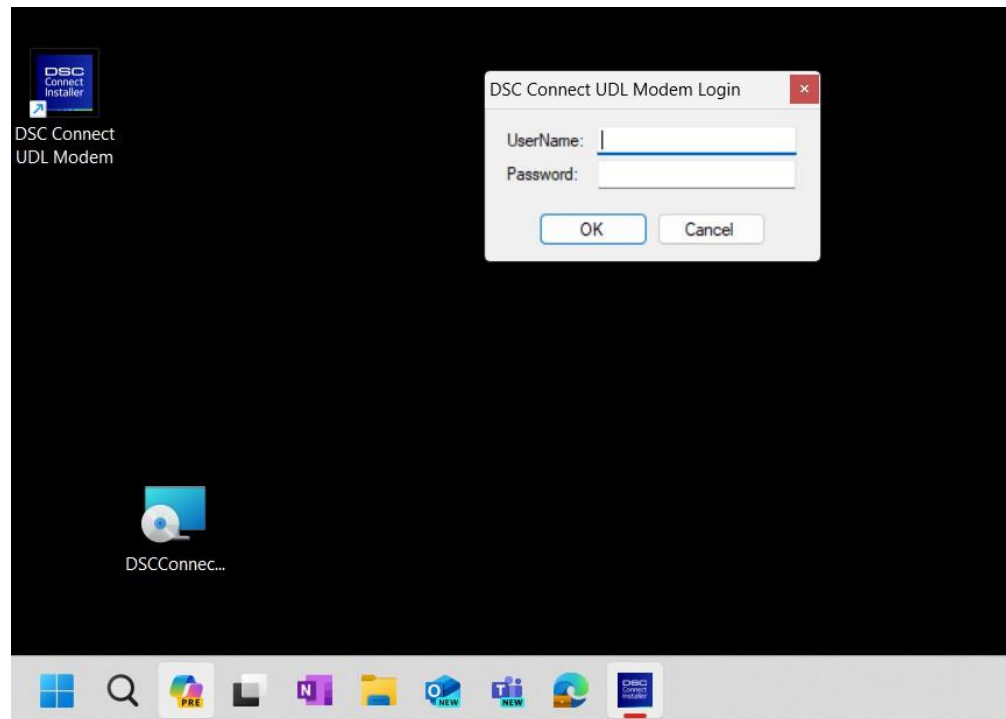


Software Modem Installation

Step 4

Enter your installer credentials (Pic. 7).

These are the same credentials you have for the **DSC Connect Installer Portal**.

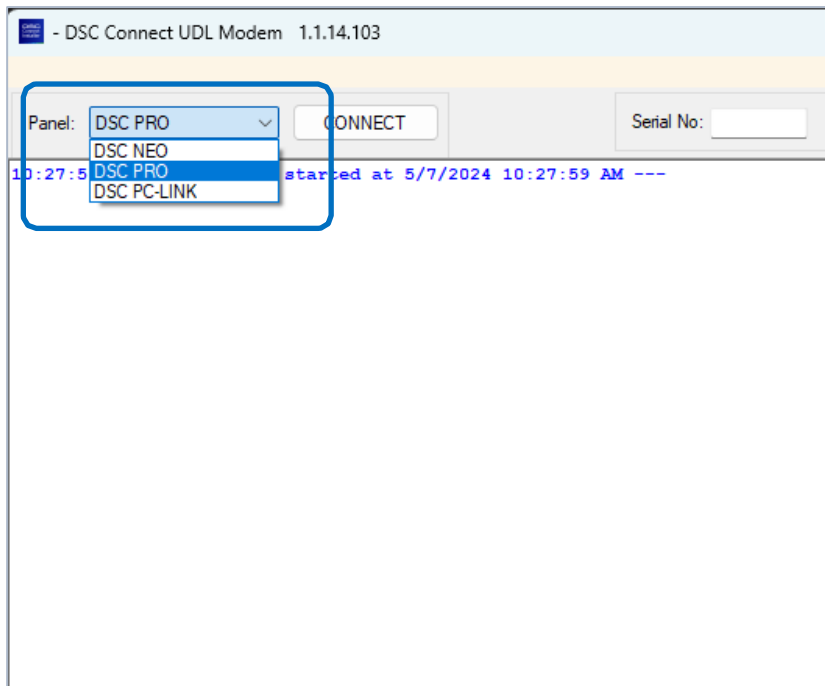


Pic. 7

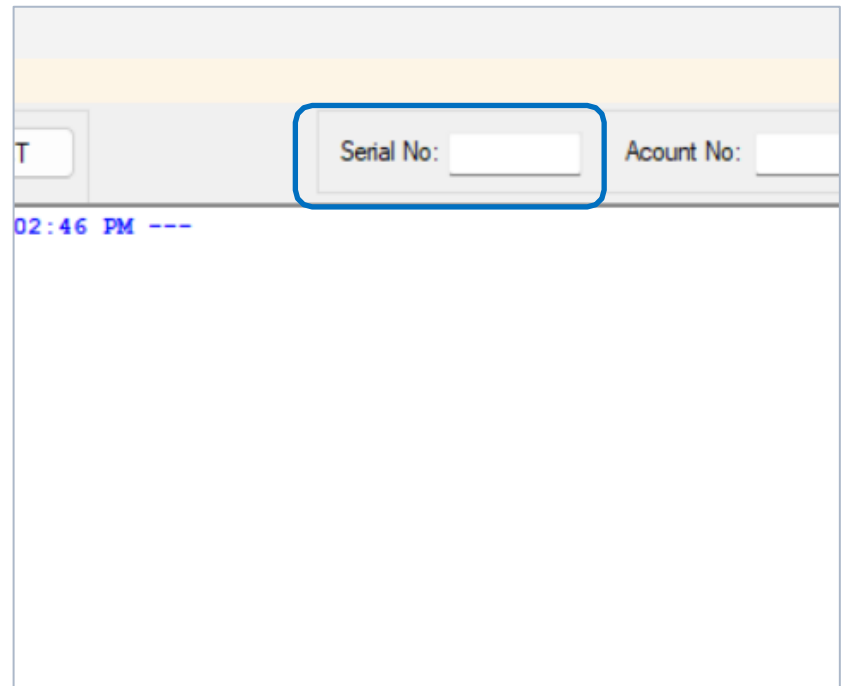
Step 5

Navigate to the dropdown menu and select the desired panel type (Pic. 8).

Add your device serial number by clicking the **Serial No** text box (Pic. 9).



Pic. 8

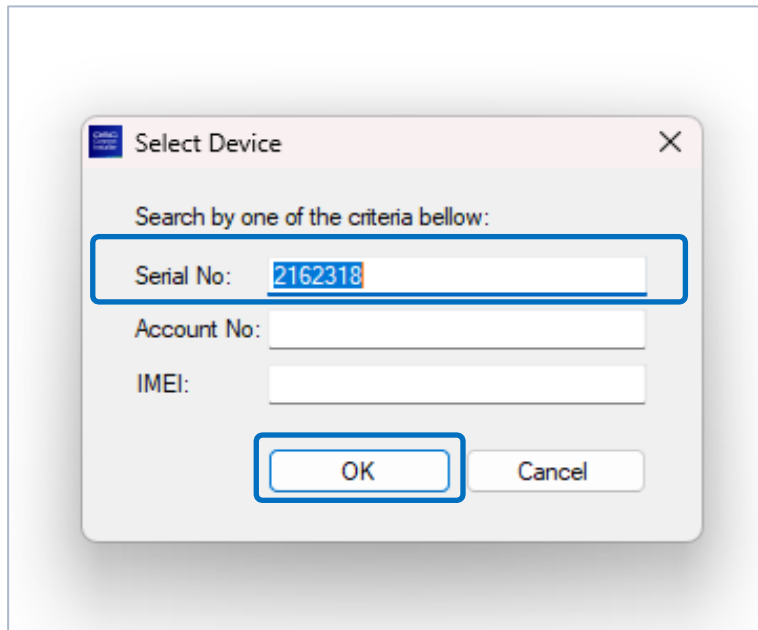


Pic. 9

In the pop-up dialog, enter your Device **Serial number** and click the **OK** button (Pic. 10).

Click the **Connect** button (Pic. 11).

Step 6: Open the **DLS software**.



Pic. 10

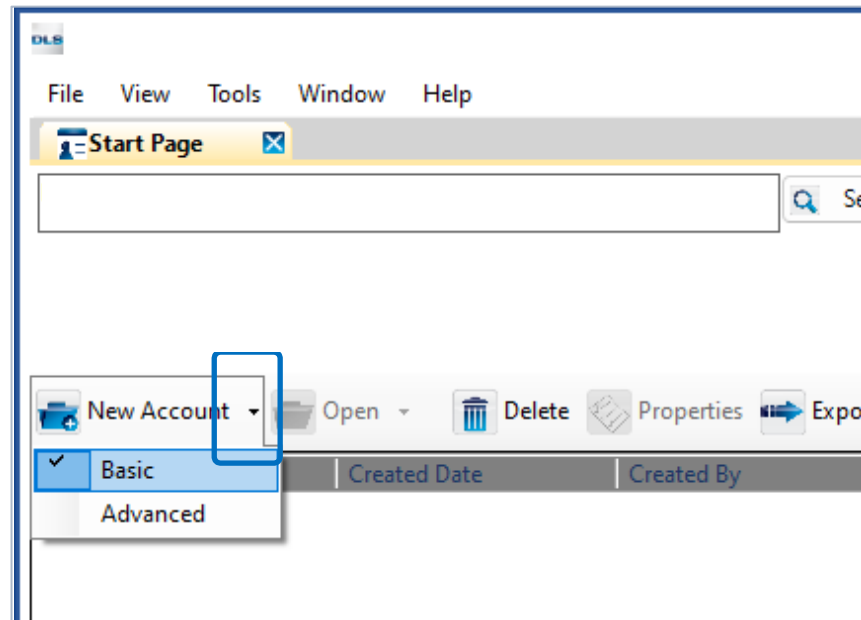


Pic. 11

Create an account for the DSC PowerSeries NEO

Step 1: Start DLS 5 Program and create a New Account by clicking the **New Account** dropdown.

From the options select **Basic**.



Pic. 12

Create an account for the DSC PowerSeries NEO

Step 2: Enter the **Account Name** and **Panel Type**. Select connection Type **IP (TL280(P)E v5.4**.

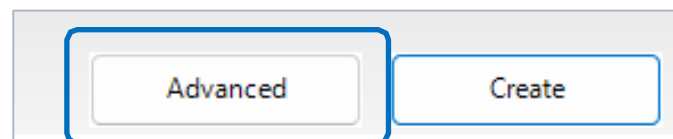
Enter the IP address **127.0.0.1** under the **IP** section.

The screenshot shows a window titled "Create New Account (Basic)". Under the "General Account Info" section, the following fields are filled:

- Account Name: DSC_NEO_Example
- Account Group: Root
- Panel Type: HS2128 E v1.3EN
- Connection Type: IP (TL280(R)E v5.4)
- IP: 127. 0. 0. 1

Pic. 13

Then click the **Advanced** button:



Pic. 14

Create an account for the DSC PowerSeries NEO

Step 3: In the Advanced menu, select your panel type under the **Panels/Modules** section.

Then modify the **Panel ID Code** and **DLS Access Code** in accordance with Panel Installer Sections [404] and [403], respectively.

Create A New Account

Account Name
DSC_NEO_Example

HS2128 E v1.3EN

Comments
Description

Options

[404] Panel ID Code 2128000000
[403] DLS Access Code 212800

Connection Type:
PSTN Add
Module
3G2080 v4.0 Add
☐ Archived

This is information about the panel or module that is added to the account. Optionally a device Description or Alias can be added to help in identifying the panel or module in the future.

☐ Automatically Open Account

Previous Next Create Cancel

Pic. 15

Create an account for the DSC PowerSeries NEO

Step 4: Navigate to **Panel Type** (e.g. HS2128 E v1.3EN) > **TL280(R)E v5.4** and set the **GS / IP installers Code** to **CAFE**.

Create A New Account

Account Name
DSC_NEO_Example

Tree View:
DLS 5 v1.74 Account
Customer Account
Account Group
Panels/Modules
HS2128 E v1.3EN
TL280(R)E v5.4
IP
Template

TL280(R)E v5.4

Comments
Description

Options
Communicator ID (MAC Address)
[851][011] GS / IP Installers Code **CAFE** Please enter 4 hexadecimal characters.

Connection Type:
IP Add
☐ Archived

Delete

This is information about the panel or module that is added to the account. Optionally a device Description or Alias can be added to help in identifying the panel or module in the future.

☐ Automatically Open Account Previous Next Create Cancel

Pic. 16

Create an account for the DSC PowerSeries NEO

Step 5: Navigate to **Panel Type** (e.g. HS2128 E v1.3EN) > **TL280(R)E v5.4** > **IP** and set the **Port** to **5123**.

Finally, click the **Create** button.

Create A New Account

Account Name
DSC_NEO_Example

Tree View:
DLS 5 v1.74 Account
 Customer Account
 Account Group
 Panels/Modules
 HS2128 E v1.3EN
 TL280(R)E v5.4
 IP
 Template

IP
IP: 127. 0. 0. 1
Port: 5123
TLink Account Code: _____

Advanced
Receiver IP: 127. 0. 0. 1
Receiver Port: 3064
Receiver Password: ****
☐ Use Alternate Table

Delete

The Ethernet/Internet connection type is used to establish a connection to your communicator or panel over the Internet, LAN or WAN. Please enter the Public IP address and Port number that is configured to accept incoming DLS connections to the communicator.

☐ Automatically Open Account

Previous **Next** **Create** **Cancel**

Pic. 17

Create an account for the DSC PowerSeries

Step 1: Start DLS 5 Program and create a new account by clicking the **New Account** dropdown and select **Basic**.

Step 2: Under **General Account Info**, enter an **Account Name** and the **Panel Type**.

General Account Info

Account Name: DSC_PCxxxx_Example

Account Group: Root

Panel Type: PC1832 v4.2

Connection Type: IP (TLink)

IP: 127. 0. 0. 1

Encryption Key:

Account Template: (none)

PC1832 v4.2

[404] Panel ID Code: 183200

[403] DLS Access Code: 183200

☐ Open Account

Advanced Create Cancel

For **Connection type** select **IP (TLink)**.

Enter **IP** 127.0.0.1.

Encryption Key must be left empty.

Enter **Panel ID Code** and **DLS Access Code**.

Click the **Advanced** button.

Pic. 22

Create an account for the DSC PowerSeries

Step 3: From **Panels/Modules** select the **Panel type** (e.g. PC1832 v4.2).

Then verify **Panel ID Code** and **DLS Access Code**.

Create A New Account

Account Name
DSC_PCxxxx_Example

Panels/Modules
DLS 5 v1.74 Account
Customer Account
Account Group
Panels/Modules
PC1832 v4.2
127.0.0.1
Template

PC1832 v4.2
Comments
Description

Options
[404] Panel ID Code 183200
[403] DLS Access Code 183200 Please enter 6 hexadecimal characters.

Connection Type:
PSTN Add
Module
RFK5500 v1.0 Add
☐ Archived

This is information about the panel or module that is added to the account. Optionally a device Description or Alias can be added to help in identifying the panel or module in the future.

☐ Automatically Open Account

Previous Next Create Cancel

Pic. 23

Create an account for the DSC PowerSeries

Step 4: Go to **Panels/Modules > Panel Type** (e.g. PC1832 v4.2) > **127.0.0.1**.

Set port **5123** under the **TLink Port**.

Then click the **Create** button.

Create A New Account

Account Name
DSC_PCxxxx_Example

TLINK IP
TLINK IP: 127. 0. 0. 1
TLink Port: 5123
Encryption Key:

Advanced
Receiver IP: 127. 0. 0. 1
Port: 3061
Receiver Password: cafe
TLink ID:
Console Password: CAFE
Console Port: 3064

The T-Link connection type is used to establish a connection to a T-Link or Panel over the Internet, LAN or WAN. Please enter a valid IP address and port number. If your T-Link has encryption enter the encryption key that will be used to encrypt the data.

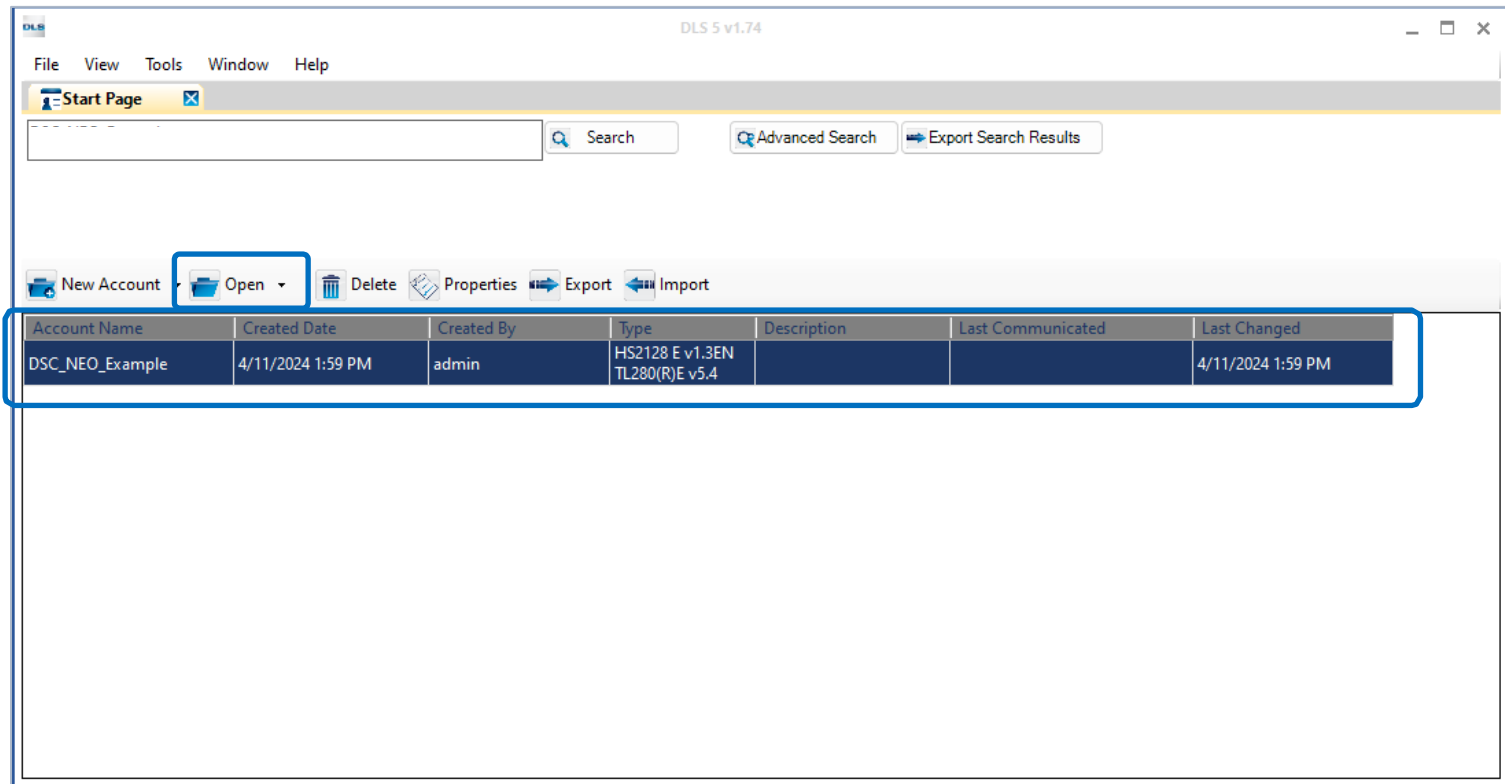
☐ Automatically Open Account

Pic. 24

Account created successfully

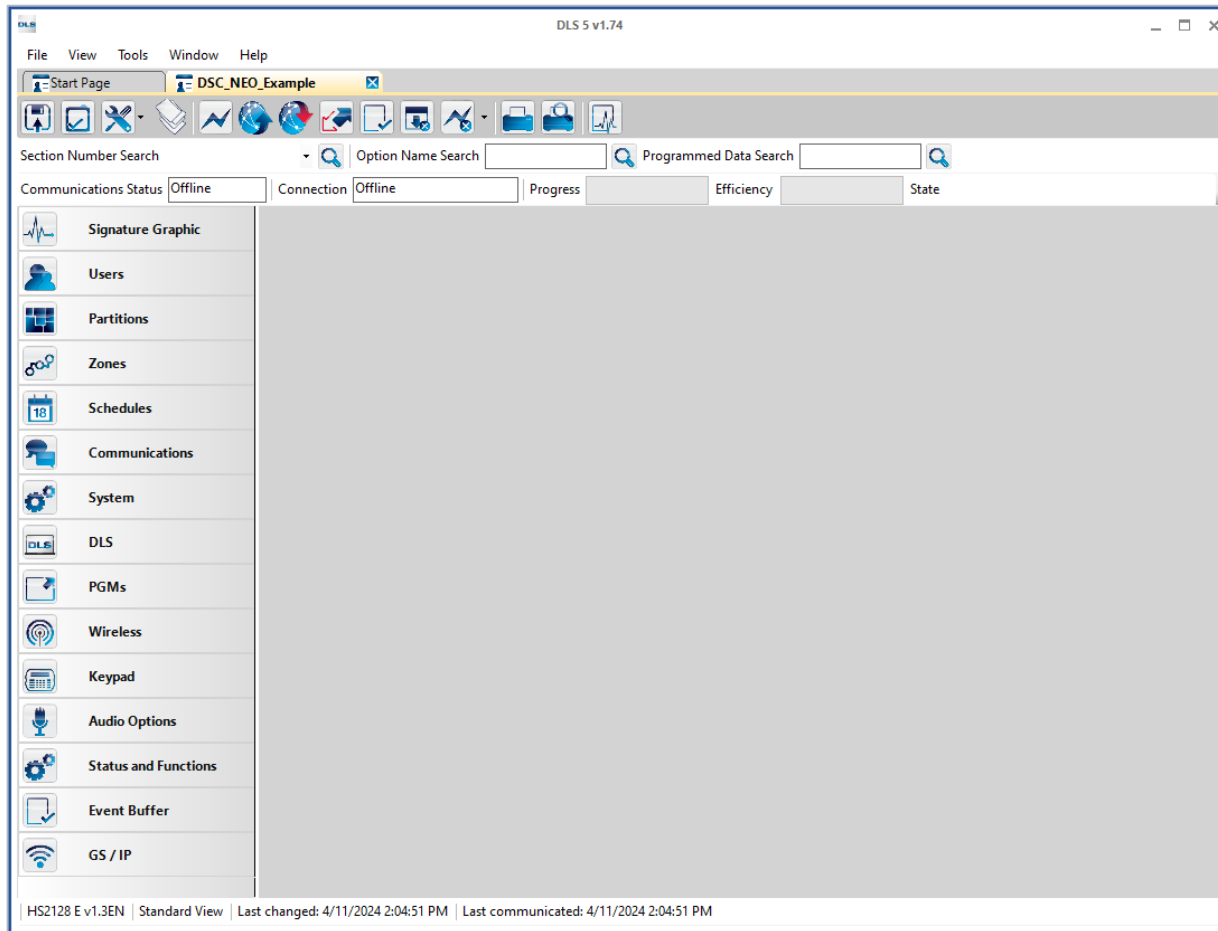
Once you have successfully set up your account for your **PowerSeries**, **PowerSeries NEO**, you can view it on the DLS 5 Start Page.

To open the account, double-click it or, alternatively, click the account and then click the **Open** button.



Pic. 25

When you open the account, it loads in a new tab.

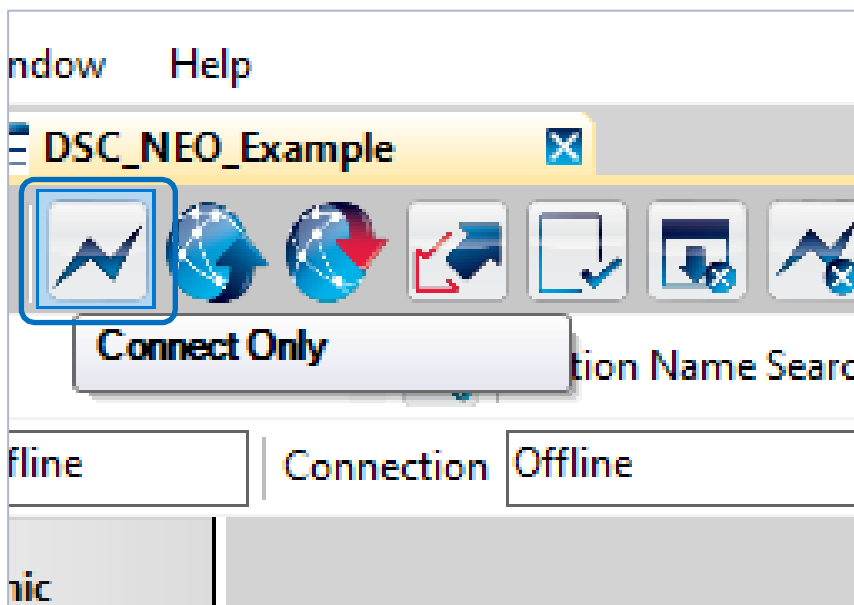


Pic. 26

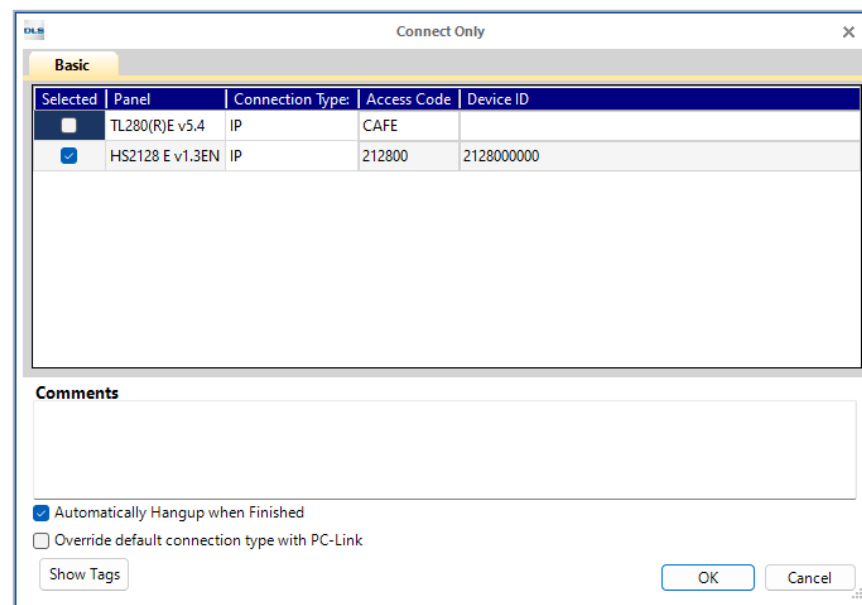
Connect to panel

To connect to the panel, click the **Connect Only** button and click **OK** (Pic. 27).

Note: For *DSC PowerSeries NEO* unselect **TL280(R)E v5.4** first (Pic. 28).



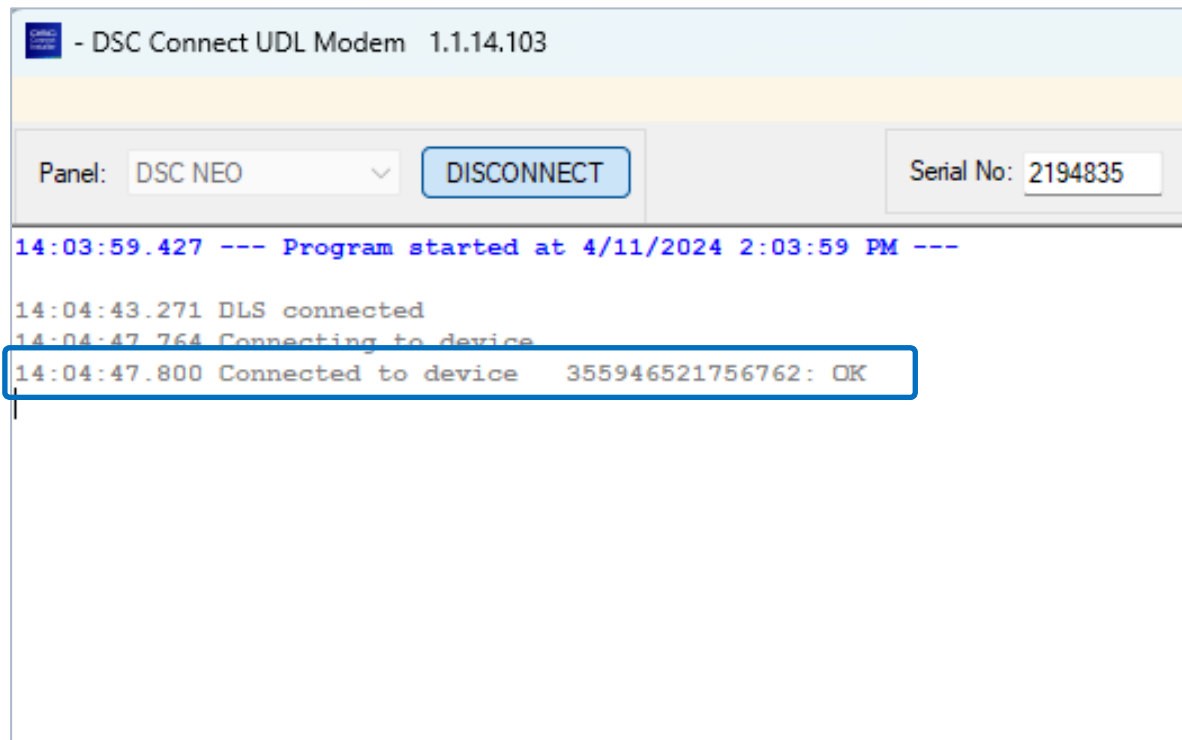
Pic. 27



Pic. 28

Connect to panel

When your device connects, you will see a confirmation in the **DSC Connect UDL Modem** log:

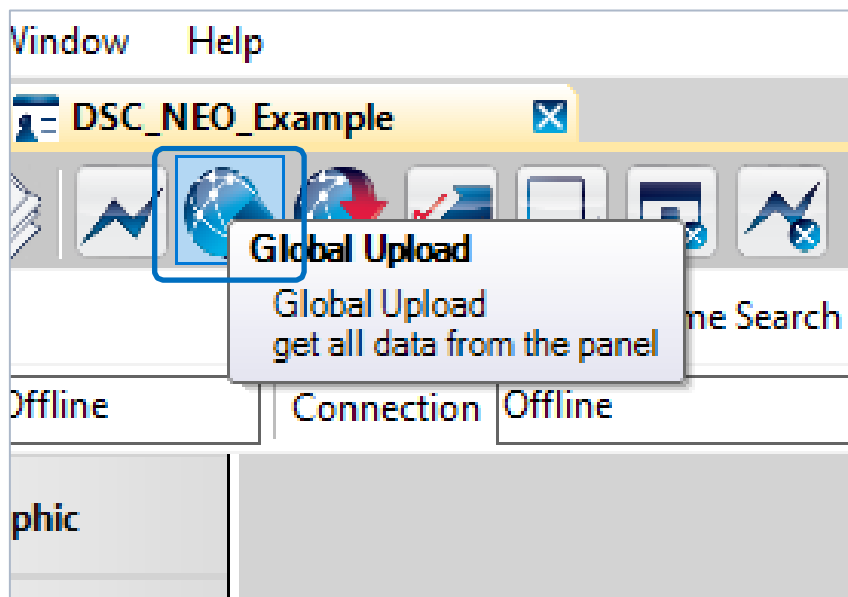


Pic. 29

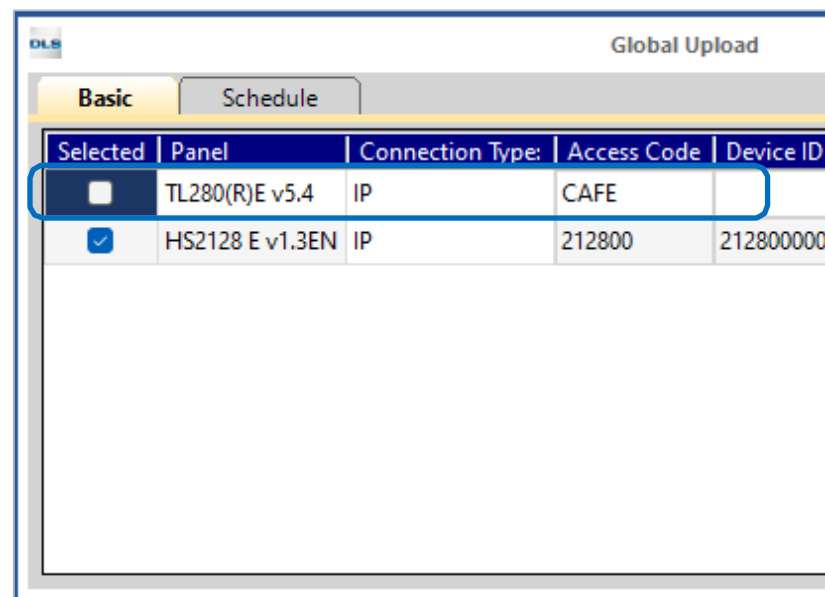
Global Upload

To get all data from the panel, click the **Global Upload** button and then click **OK**.

Note: For *PowerSeries NEO* panels, unselect **TL280(R)E v5.4** first.



Pic. 30

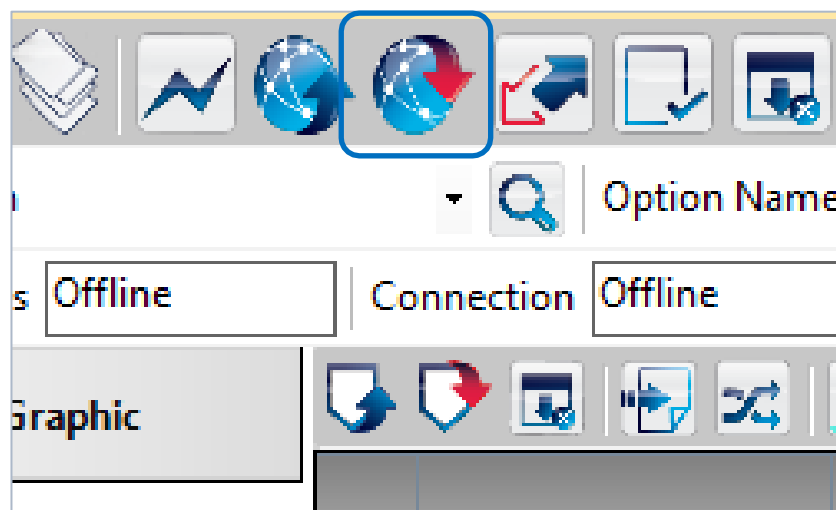


Pic. 31

Global Download

To upload all data to the panel, click the **Global Download** button (Pic. 32) and then click **OK**.

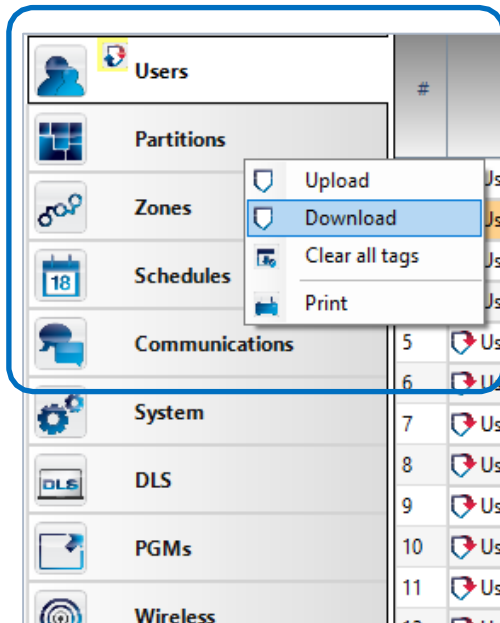
Note: You can use Global Download for **PowerSeries** and **PowerSeries Pro** panels only!



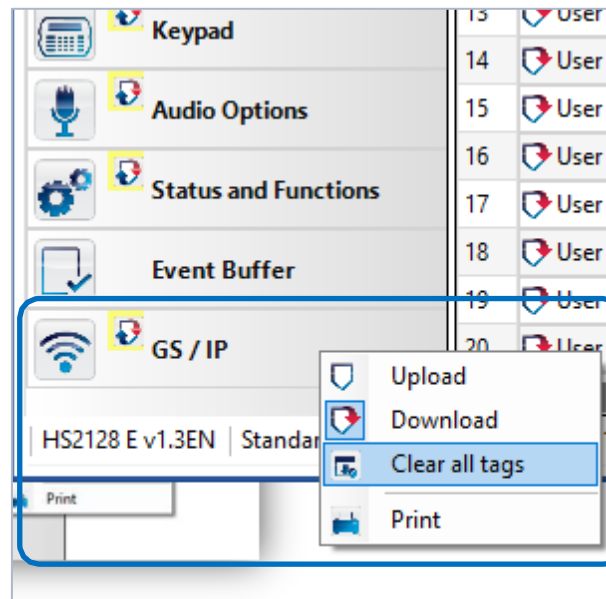
Pic. 32

Global Upload (for PowerSeries NEO)

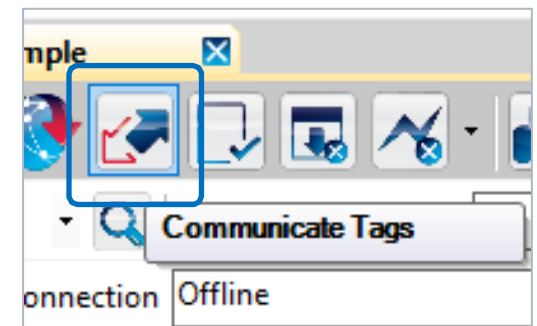
Note: For **PowerSeries NEO** you must manually select all options and set them for **Download** as shown in Pic. 33, and **Clear all tags** for **GS / IP** option only (Pic. 34), instead of performing a Global Download. Finally, click the **Communicate Tags** button (Pic. 35) and then click **OK** (Pic. 36).



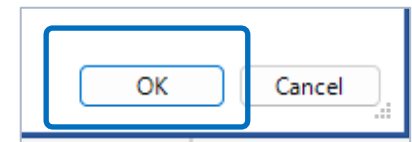
Pic. 33



Pic. 34



Pic. 35



Pic. 36



Phone: 1 800 387 3630

Email: intrusion-support@jci.com

Website: <https://www.dsc.com/>