

# How do I configure the TP-Link Wi-Fi router in the Tether app?

## Setup Guide

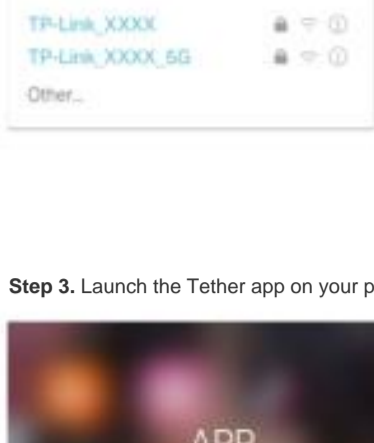
**Step 1. Connect** <sup>1</sup>Connect an Ethernet cable from the modem (as pictured) to the **WAN** port of your router. <sup>2</sup> or the Ethernet port on the wall like Pic

Image 1



Image 2

**Step 2. Connect your smartphone to the TP-Link Wi-Fi.** The default wireless network name and password for the TP-Link wireless router are printed on the label underneath.



**Step 3. Launch the Tether app on your phone.**



**Step 4. Select your TP-Link wireless router from the device list.**

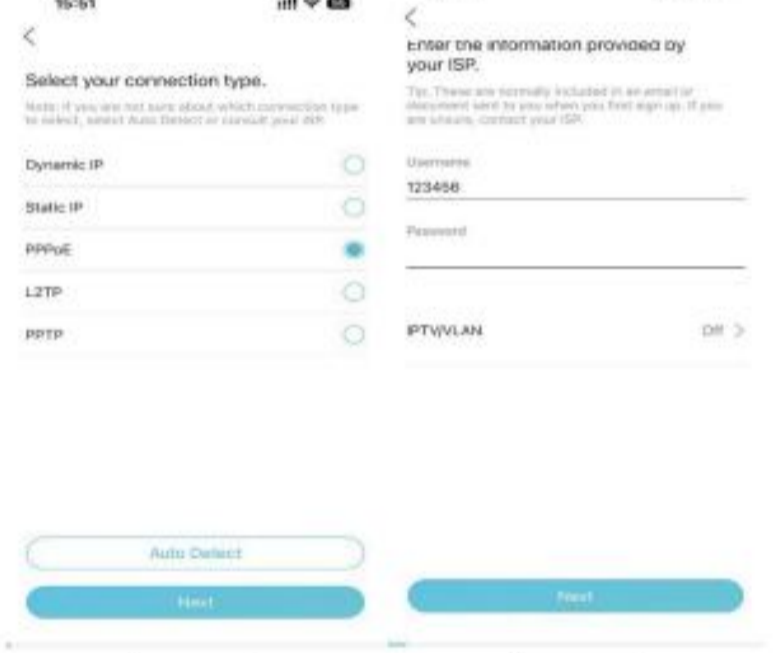


**Step 5. Create a login password for the TP-Link wireless router.**

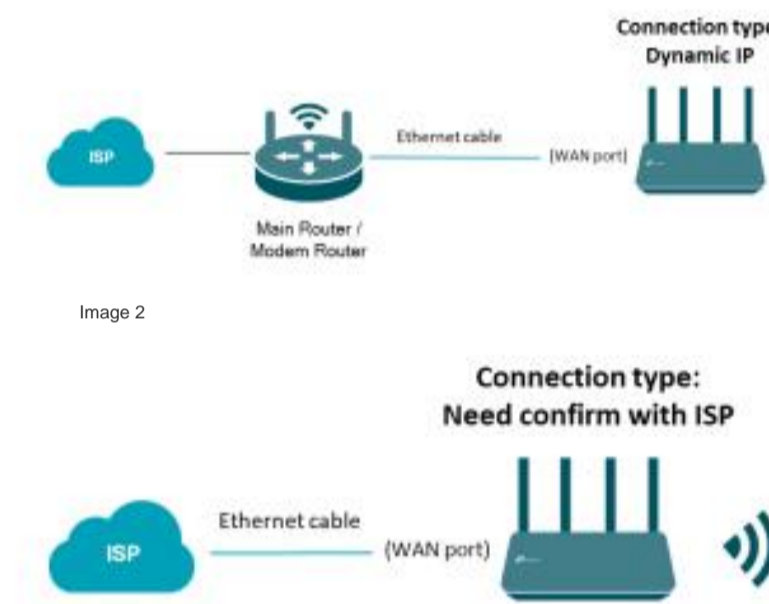


**Step 6. Select the connection type, such as PPPoE, Dynamic IP, or Static IP, and complete the VLAN ID if required by your ISP.** All of these must be confirmed with your ISP. [Common connection types from regular ISPs include: The information we](#) have compiled is for reference purposes only.

**If the connection type is dynamic IP, select it and go to the next step.**



**If the connection type is PPPoE, enter the username and password provided by your ISP and proceed below.**



Note: For connection type: You can choose dynamic IP when the TP-Link router is connected to a router main as Pic 1, or you are advised to confirm with your ISP if your TP-Link router is directly connected to the ISP like Pic 2.

Image 1

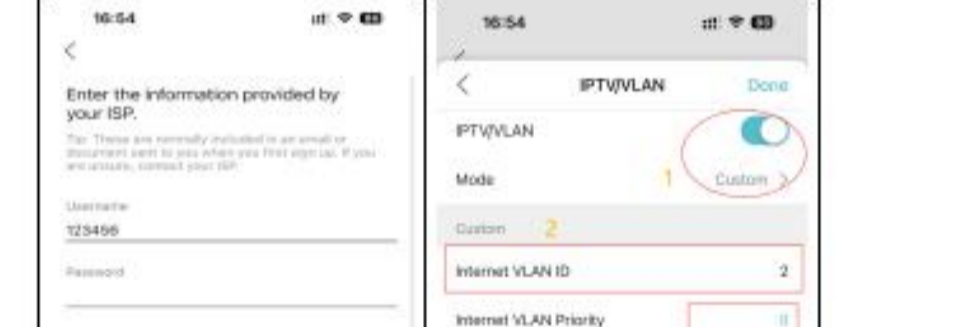
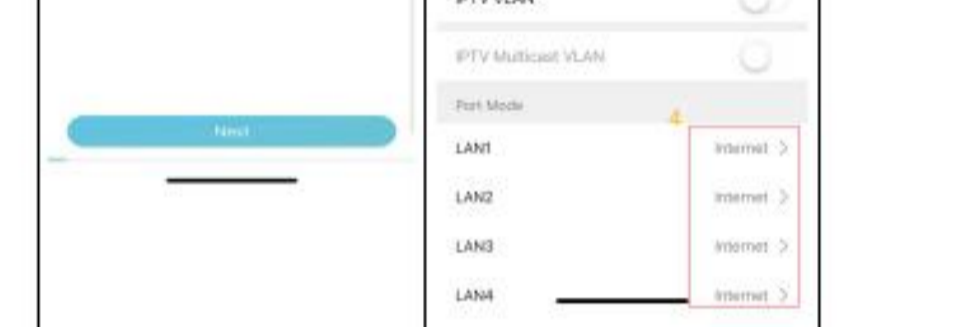
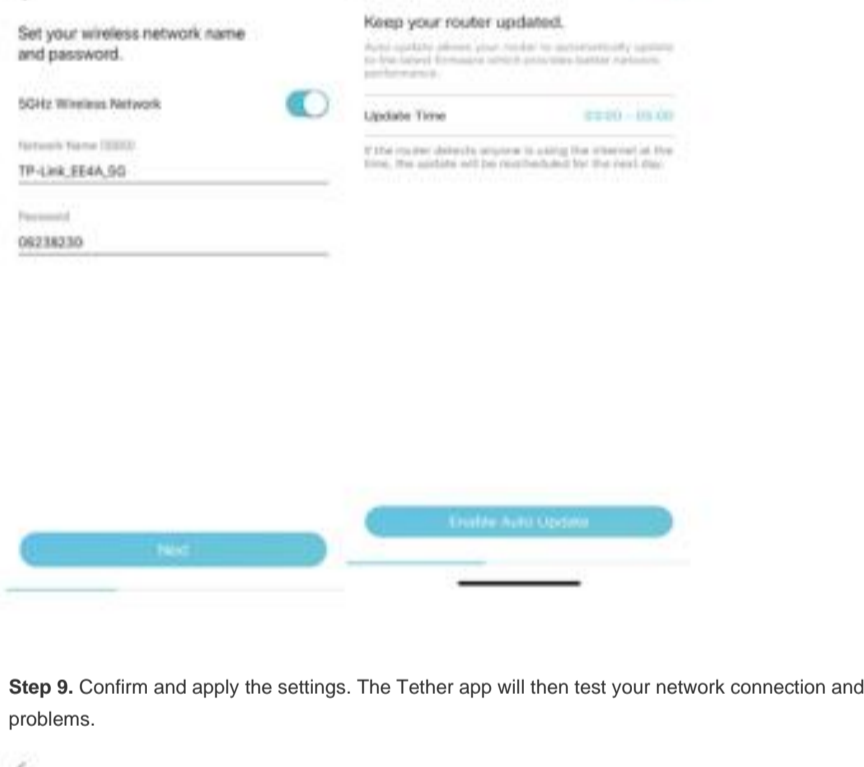


Image 2



**If your ISP requires a VLAN ID, obtain the VLAN ID from your ISP and enter it by following these steps:**

1. Enable IPTV/VLAN, select Custom if your ISP is not listed;
2. Enter the VLAN ID provided by your ISP for the Internet VLAN ID;
3. Check the 802.1Q label and leave the priority as default.
4. Select Internet for all LAN ports.
5. Do not change other settings unless necessary and click "Done" to save the settings. effective.



**Step 7. Confirm "Do you need to change your MAC address?" Choose "Do not change MAC address (recommended)" if you are not sure.**



**Step 8. Customize the 2.4 GHz and 5 GHz wireless network settings of the TP-Link wireless router. Set your desired update time or skip it.**



**Step 9. Confirm and apply the settings.** The Tether app will then test your network connection and inform you if there are any problems.



**Step 10. Done!** Please enjoy your internet.

