



UniFi Layer 3 Switch

Model: USW-Pro-24

**QUICK GUIDE**



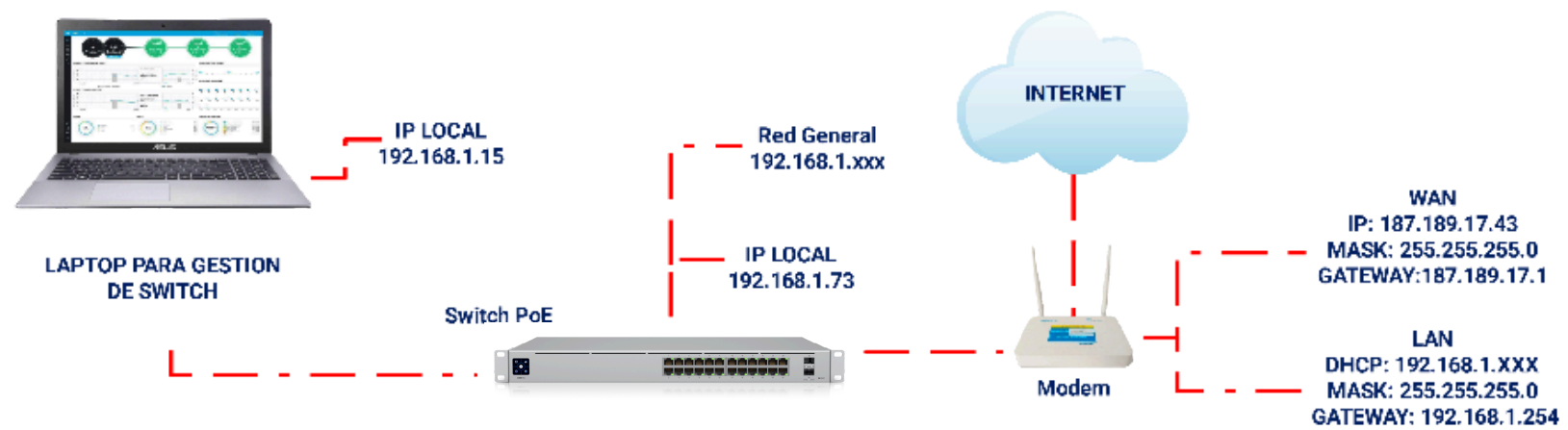
## INTRODUCTION

UniFi Network provides a centralized user interface that allows administrators to manage all network devices from a single dashboard. This makes it easy to monitor and configure the network efficiently.

## IMPORTANT POINTS

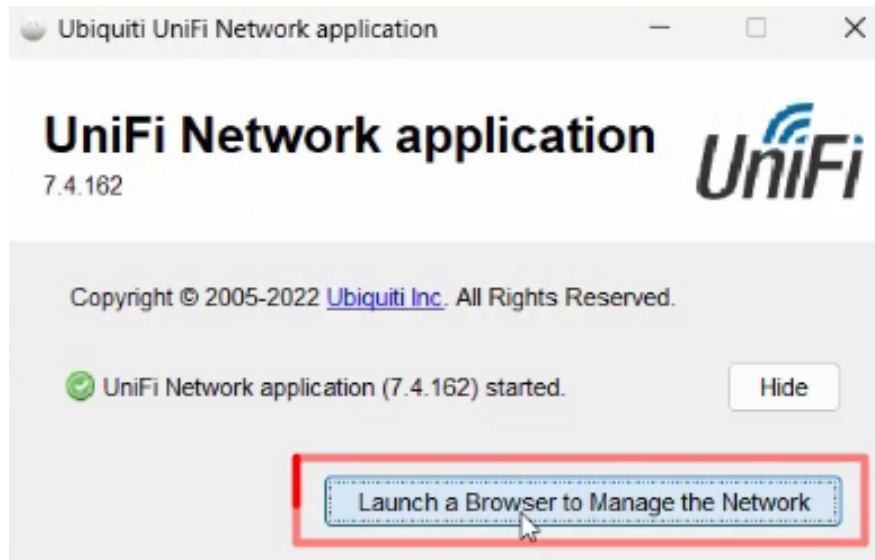
HE must establish the connections physical corresponding; this way, the UniFi Controller software will be able to detect the devices on the local network and perform the necessary adoption correctly.

# LAN Network Connection Diagram

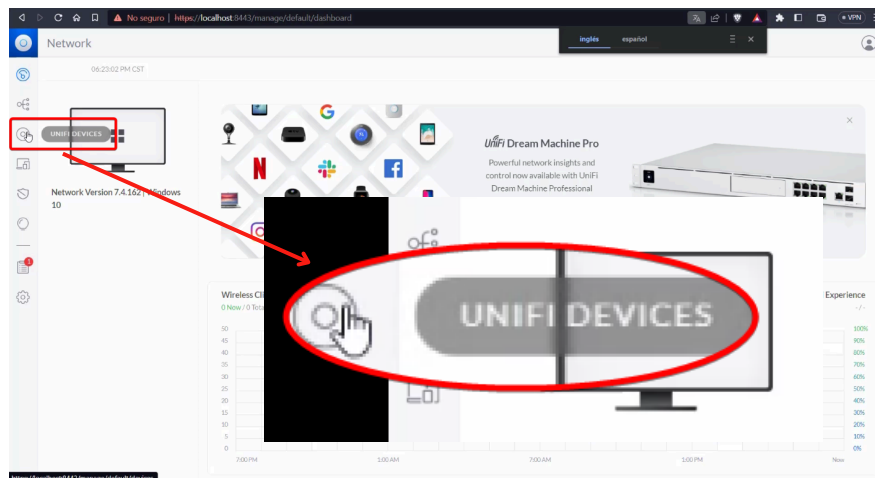


# Access Point Adoption

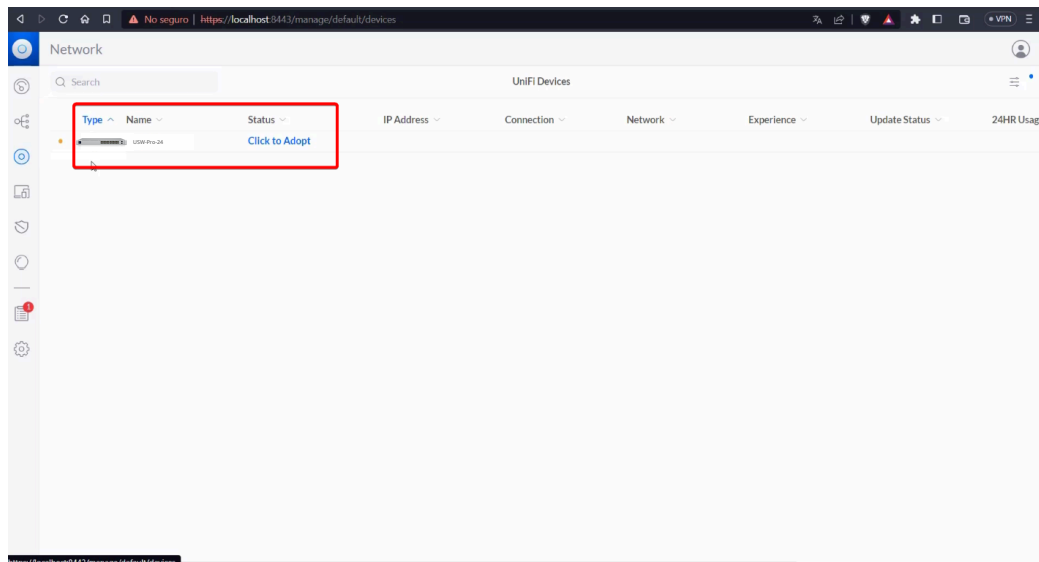
Once we have the software installed, we will click on the "Launch a Browser" button.



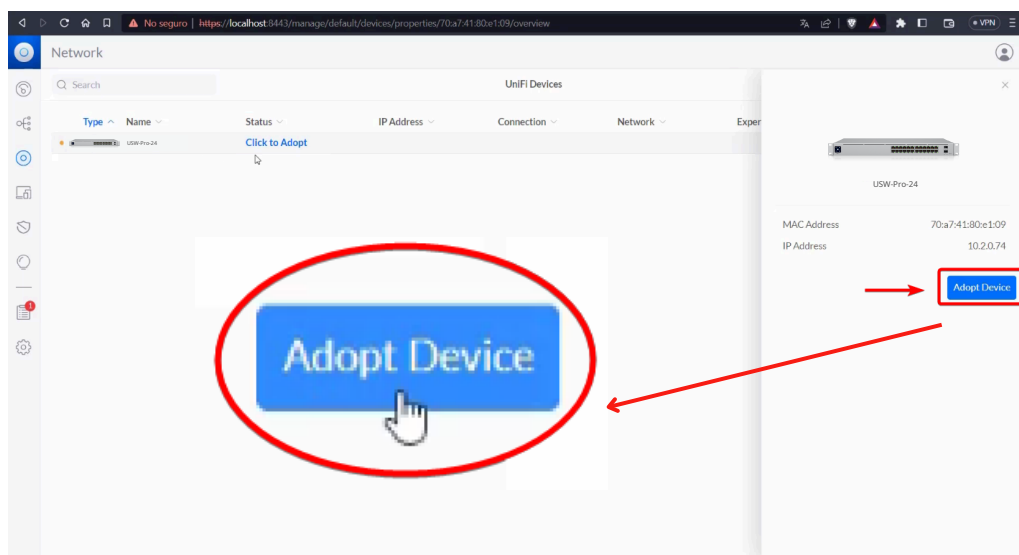
Within the software interface, we will click on the "Devices" option.



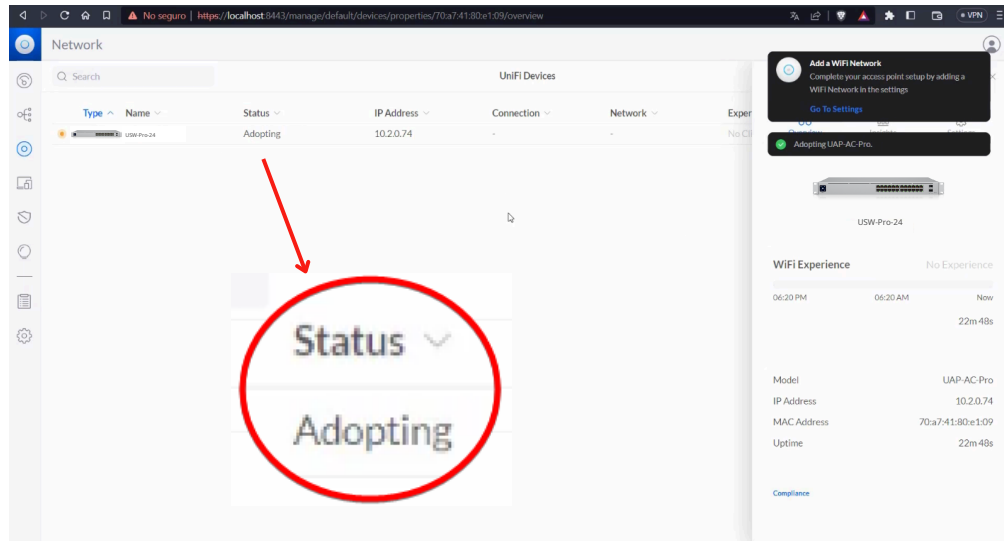
Now we will place the cursor over the device and click.



On the right side, a window will appear in which we will click on the "Adopt Device" button.

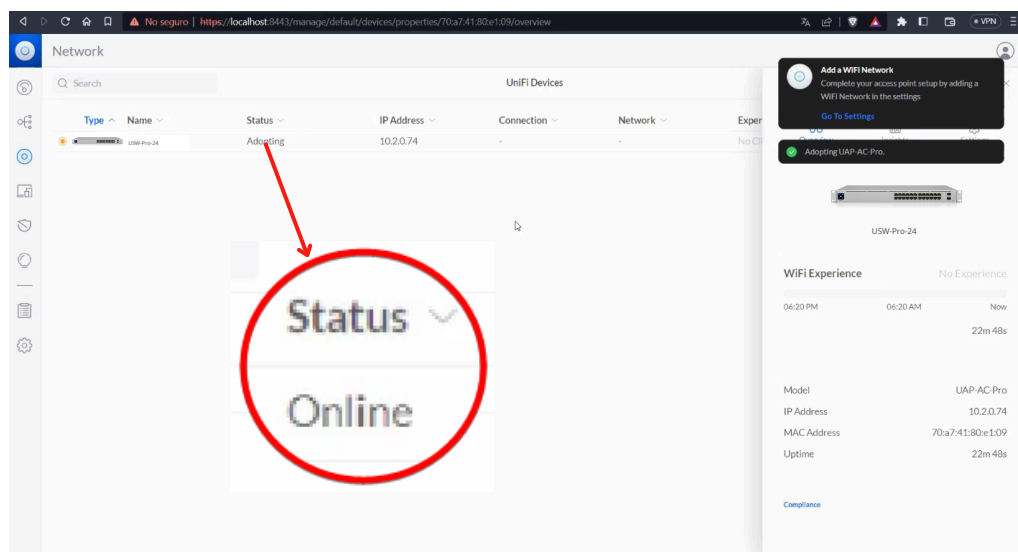


The UniFi Network software will automatically perform adoption of the UniFi device.



**NOTE:** If the software detects a new firmware version, the update process will be carried out automatically during the adoption process.

Once the "ONLINE" legend is displayed, the device adoption is complete.





## SECURITY NOTICES

1. Read, follow and save these instructions.
2. Heed all warnings.
3. Use only accessories specified by the manufacturer.



WARNING: If proper ventilation is not provided, a risk of fire may exist. Allow at least 20 mm of clearance next to the ventilation holes to ensure proper airflow.



WARNING: To reduce the risk of fire or electric shock, do not expose this product to rain or moisture.



WARNING: Do not use this product in a location where it may be submerged in water.



WARNING: Avoid using this product during an electrical storm as there may be a remote risk of electric shock from lightning.