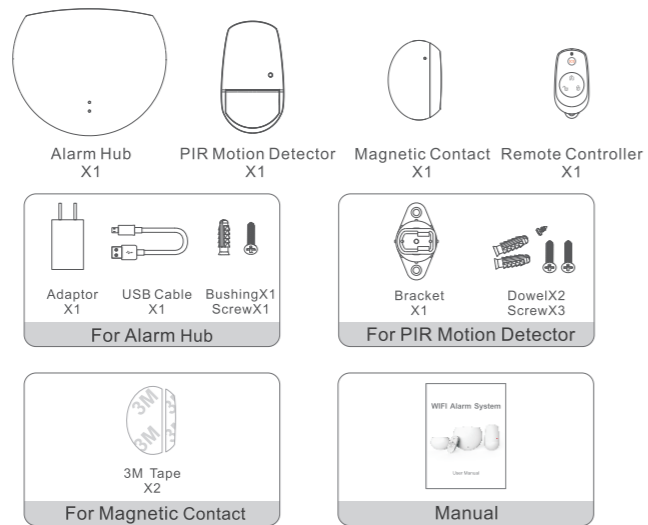


WiFi Alarm System

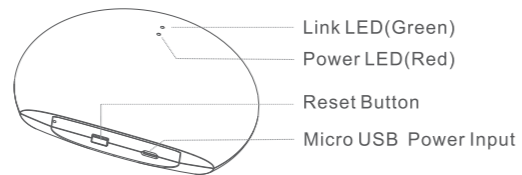


User Manual

1 Packing List



2 Alarm Hub



-1-

3 Device Connection

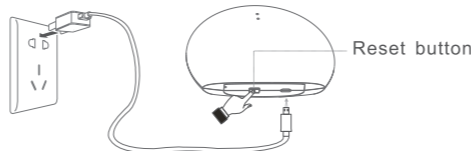
I. App Installation
Scan the QRcode to download the APP and install it.



Android IOS

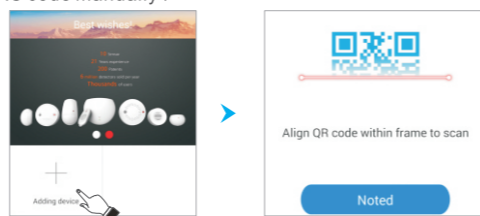
Notice: Search and download "Smart~Home" on APP store or Google play.

II. Power Connection
When power on, the green LED should flash quickly; If not, keep pressing reset button until the green LED flashes quickly.



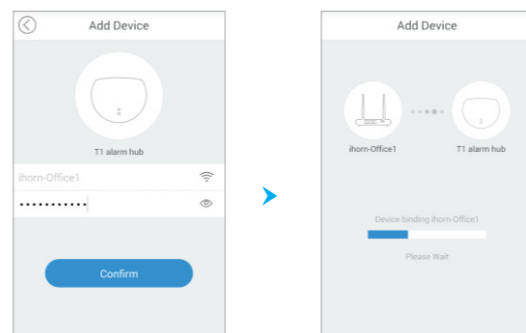
III. Open the APP, add alarm hub.

1. Keep the mobile phone connect to Wifi successfully, then open the APP to add the device, and scan the QRcode on alarm hub or input the MAC code manually .



-2-

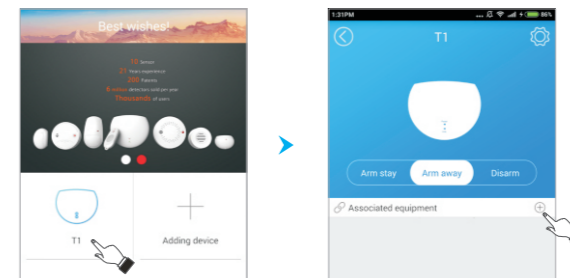
2. Enter WIFI password, then press "confirm" button, and wait for success. When found the device, add it, then configuration succeed. Remark: Proceed the configuration in a place with good signal. If failed, keep pressing the reset button for 5s, after the Link LED flash quickly, then add the device again.



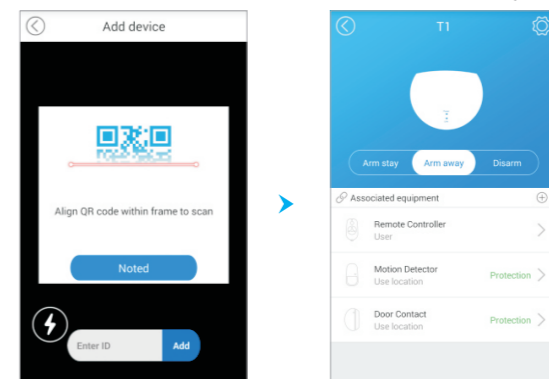
-3-

4 Add Accessories

1. Click "Alarm Hub" to enter into the operation page, then click ⊕ to add the accessories

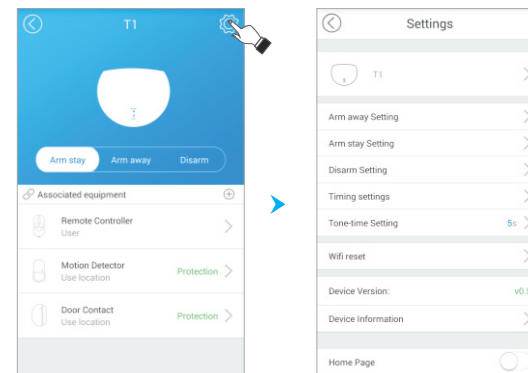


2. Scan the QRcode or enter the ID number manually, the connected sensors will be shown as below after connected successfully.



-4-

3. Alarm Setting
Click this button ⚙ and set it on the alarm hub operation page, and enter into the page of "settings"

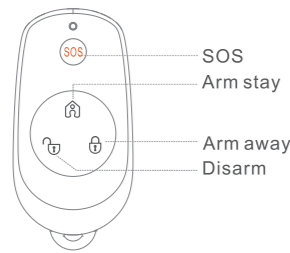
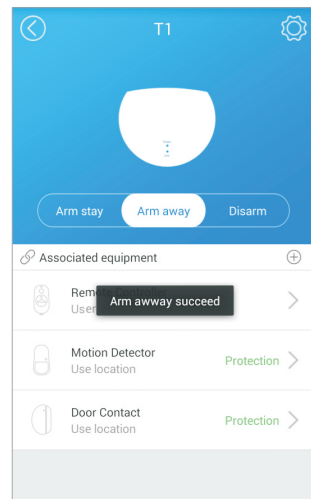


Remark:
In order to ensure your mobile phone can receive the alarm message, please do not shield the background process or delete the message of Smart~Home.

-5-

5 Alarm Hub Operation

You can choose the working mode of the alarm hub through APP operation page or remote controller, and you can proceed other setting or operation by APP.

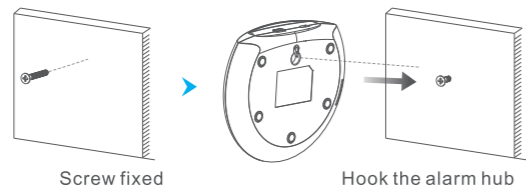


Remark :

The alarm kit have 3 working modes (arm stay、arm away、disarm) , every mode can set the sensors state seperately, while for some detectors like gas detector, smoke detector or similar detectors, the system will set as default 24-hour detectors.

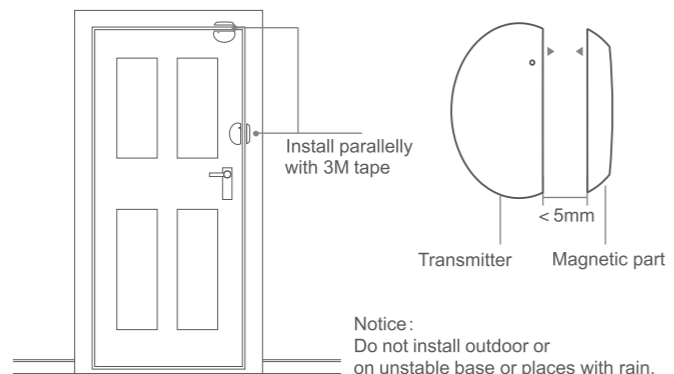
6 Installation Diagram

Alarm Hub Installation



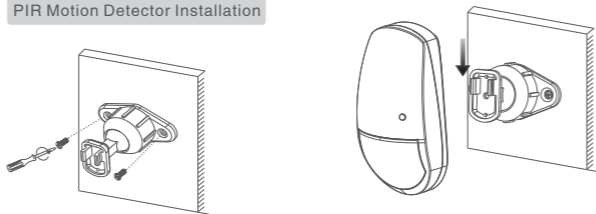
Screw fixed
Hook the alarm hub
Fix the screw on the wall, and hook the alarm hub on the screw.

Magnetic Contact Installation



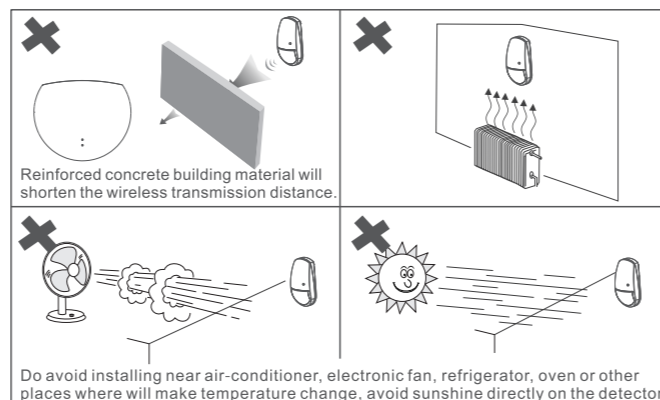
Install parallelly with 3M tape
Transmitter
Magnetic part
Notice:
Do not install outdoor or on unstable base or places with rain.

PIR Motion Detector Installation



Fix the bracket with screw to the wall.
Slide the PIR motion detector into the bracket.

Installation Notice



7 Technical parameters

| Alarm Hub | |
|-----------------------|--|
| Working Voltage | 220V AC(with external DC5V adaptor) |
| WiFi Frequency | 2.4G 802.11b/g/n |
| Receiving Sensitivity | -108dBm |
| Wireless zones | 16 |
| Working Temperature | -10°C ~ +55°C |
| Features | Cloud connected, DIY extension, Alarm, IFTTT |

| PIR Motion Detector | |
|---------------------|-----------------------------------|
| Working Voltage | 3V DC(1*CR123A battery) |
| Range | 100 meters(no obstacle) |
| Detection Distance | 12m |
| Installation Height | 2.2m |
| Detection Range | 110° |
| Features | Low voltage, Supervision function |

| Magnetic Contact | |
|------------------|--|
| Working Voltage | 3V DC(1*CR2450 battery) |
| Range | 100 meters(no obstacle) |
| Active Gap | ≥ 14mm(wooden door) |
| Features | Open/close checking, Tamper, Low voltage, Supervision function |

| Remote Controller | |
|-------------------|---------------------------------|
| Working Voltage | 3V DC(1*CR2032 Button battery) |
| Range | 80 meters(no obstacle) |
| Features | SOS, Arm away, Arm stay, Disarm |

Remark :

The wireless distance will be different if the environment has changed.

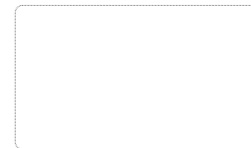
8 Guarantee

Dear customer :

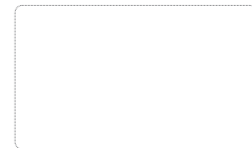
Thank you for choosing our products. Please read the instructions carefully before installation:

- Our guarantee time is one year from the date you bought. Under the condition of correct operation following the manual, if fault happen during warranty period, we'll repair for free. If fault happens in seven days, we can change for you for free.
- We will charge the repair if there are below conditions during warranty period:
 - The false caused by wrong operation or using environment;
 - The fault and damage has been repaired by others for false operation;
 - Human damage such as get in water, broken;
 - Fault caused by working with the third party products, software and so on;
 - The product QRcode can not be recognized;
 - The other faults that are not caused by our design, technology, quality and manufacturing.

We have the final right to the warranty terms.



Alarm Hub



PIR Motion Detector



Magnetic Contact



Remote Controller